

Districts of Anchorage: Draft Proposal (4)

March 13, 2024

Anchorage Economic Development
Corporation (AEDC) &
Leadership Anchorage (LA) 27

Tanisha Gleason
Lillian Maassen
Christina Ranken
Helena Sarcone



Land Acknowledgement

I would like to acknowledge that we are on the ancestral lands of the Dena'ina people, the first people of Anchorage. I would like to thank the Dena'ina people and surrounding indigenous groups who have acted in good stewardship of this land for millennia so that we may be here today.

Land Acknowledgement is a formal statement recognizing the Indigenous people of a place. It is a public gesture of appreciation for the past and present Indigenous stewardship of the lands that we now occupy. Land Acknowledgment opens a space with gratefulness and respect for the contributions, innovations, and contemporary perspective of Indigenous peoples. It is an actionable statement that marks our collective movement towards decolonization and equity.

SPENARD

Keep Spenard Weird

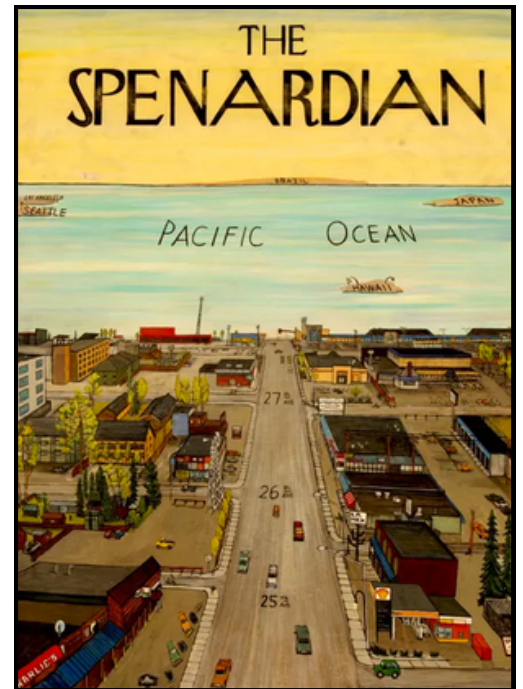
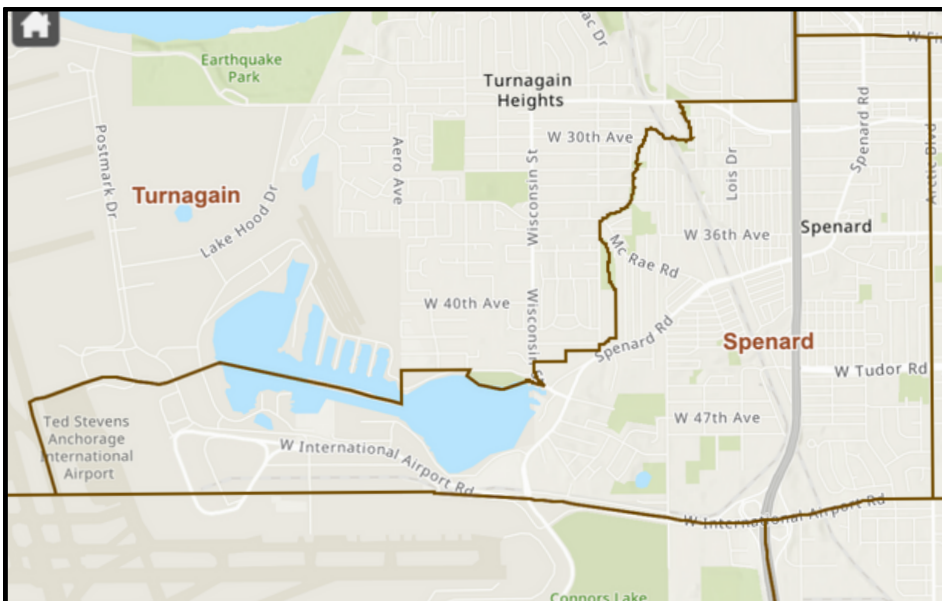
Home to countless small locally owned businesses, the historic neighborhood of Spenard offers art, music, food, fashion, sports, and more. Though it dates back to the early 1900s, when it was named after local colorful character Joe Spenard, the neighborhood was not incorporated into the municipality of Anchorage until 1975 -- and that independent spirit has remained ever since. Whether it's a cup of coffee in a cafe, a night out dancing to a local band, or a second-hand piece of gear, Spenard has it all.

Right:
"Entering Spenard 'The Land of the Free' For All" (1958)



Residents of the area, self-titled "Spenardians," pride themselves on the neighborhood's deep community-oriented nature. Spenard is home to an active Chamber of Commerce, a Community Council, and a growing number of community and art initiatives, including Spenard 2nd Saturday and Spenard Arts Collective.

There are a growing number of sustainability- and environmentally-conscious businesses, such as Blue Market AK, Title Wave Books, Rage City Vintage, Penny Royalty, Organic Oasis, Second Run Consignment, Habitat ReStore, The Writer's Block Cafe and Bookstore, and more.



Above: "The Spenardian" by local Spenard artist Duke Russell featuring Spenard road and iconic landmarks, including the Spenard Windmill.

Left: Spenard Community Council Map.

MIDTOWN

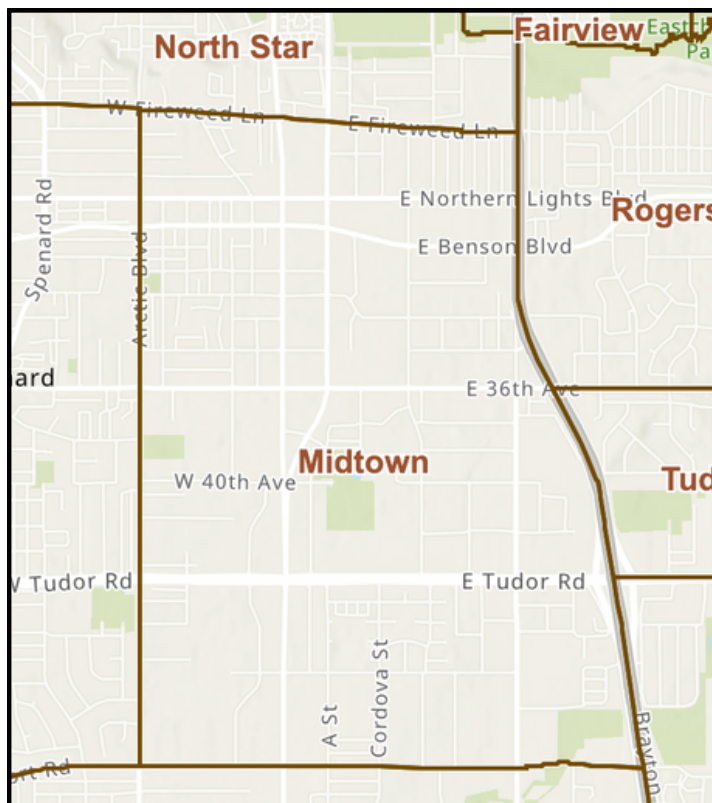
Bustling with Business

Midtown houses every kind of business imaginable. Here you will find financial institutions and internet installation companies rubbing shoulders with fitness centers and award-winning Asian grocery stores. Whether you want to grab a book at the spacious Z. J. Loussac Library or catch the newest movies available at the Century 16 theater, Midtown has you covered.

In the summer months, a neighborhood farmer's market brings locally grown greens to the heart of Midtown. A nearby rock climbing gym is the perfect place to gain some year-round elevation. In winter, the groomed skating oval at Cuddy Family Midtown Park invites families to spend some time on the ice. In every season, Midtown is a bustling destination for shopping and business.



Above: Cuddy Family Midtown Park.



Above: Midtown Community Council Map and the proposed location of a Midtown business improvement district.

Spend time exploring the local brew scene. Midtown Anchorage and its adjacent neighborhoods boast a buzzing concentration of breweries, a meadery, and a distillery, so craft connoisseurs can enjoy a self-guided tour of some of the city's favorite taps and tasting rooms. Some are located conveniently close to neighborhood trailheads, inviting patrons to cap off a bike or stroll with some refreshing suds.



Left: Mooses Tooth Pub & Pizzeria bustling with patrons in the Alaskan summer.

UMED DISTRICT

Resources Around the Corner

The UMED District holds Alaska's premier university, the University of Alaska Anchorage (UAA), and the largest hospital in the state, Providence Alaska Medical Center (PAMC). Centrally located, UMED is right off the Anchorage trail system and home to University Lake Park, making it a destination for dog-owners, walkers, bikers, and skiers alike and ideal for car-free commutes.

In addition to UAA and PAMC, the UMED organizations include Alaska Public Media (KAKM), Alaska Native Tribal Health Consortium (ANTHC), Alaska Pacific University (APU), Alaska Psychiatric Institute (API), Anchorage School District (ASD), McLaughlin Youth Center (MYC),



Above: UAA with Providence in the background.

Southcentral Foundation (SCF), and the Trust Land Office (TLO). These organizations provided staff representatives to the UMED District Steering Team, along with project partners including several Alaska Legislators and the Airport Heights, Rogers Park, and University Area Community Councils.

Located in the heart of Anchorage and with campuses throughout Southcentral Alaska, UAA is where culture, innovation and adventure converge. The unique locations provide unparalleled access to industry connections, arctic research, outdoor recreation and more, facilitating once-in-a-lifetime experiences, groundbreaking education, and impactful careers.



Above: The UMED district according to the 2016 UMED District Plan Update.

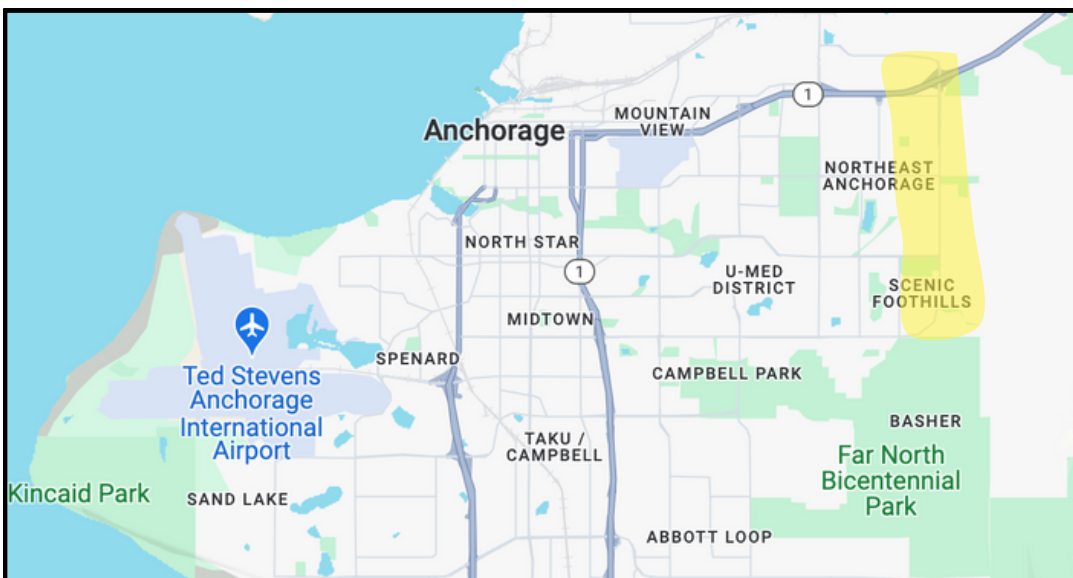
MULDOON

Family & Shopping Favorites

Tucked right under the Chugach Range, Muldoon Road is a major thoroughfare that connects Anchorage to the Glenn Highway. Affectionately called 'the breakfast district' by residents, Muldoon is lined with locally owned restaurants, shops, and services. Residential neighborhoods, schools, and a slew of parks can be found on either side. Muldoon is a hub for the People Mover bus system and several active community councils.



The northern portion of Muldoon Road has evolved into one of the Anchorage area's major retail districts. Developed in partnership between Browman Development Co. and Cook Inlet Region, Inc. (CIRI) in 2007, Tikahtnu Commons is a regional shopping center serving the growing needs of Anchorage, Eagle River, Joint Base Elmendorf-Richardson, and the Mat-Su Valley. The shopping center is currently anchored by Target, Lowe's, Kohl's, Best Buy, and Burlington Coat Factory.



Above: The Regal Tikahtnu movie theater with the Chugach range in the back.

Left: The proposed district of Muldoon.

Below: Tikahtnu Commons offers 19 stores, 17 food establishments, and 10 services to choose from.



COASTAL DISTRICT

Seaside Strolls and Space to Play

The Coastal District houses Kincaid Park, the largest park in the city. With nearly 40 miles of walking trails, 20 miles of single-track bike runs, a frisbee-golf course, browsing moose and even the occasional bear, Kincaid Park is a great family experience.

The Coastal District is home to some of the most high-end housing in the Anchorage bowl and voted the #1 place to live by Niche. This area is great for the whole family, with the most diverse schools in the country and a sought-after elementary school with a mission to develop kind, confident, capable, and engaged learners.

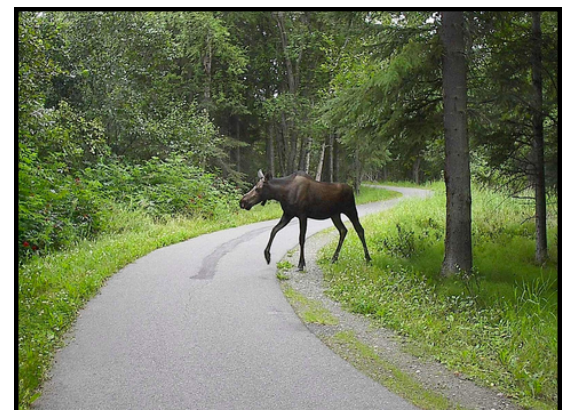
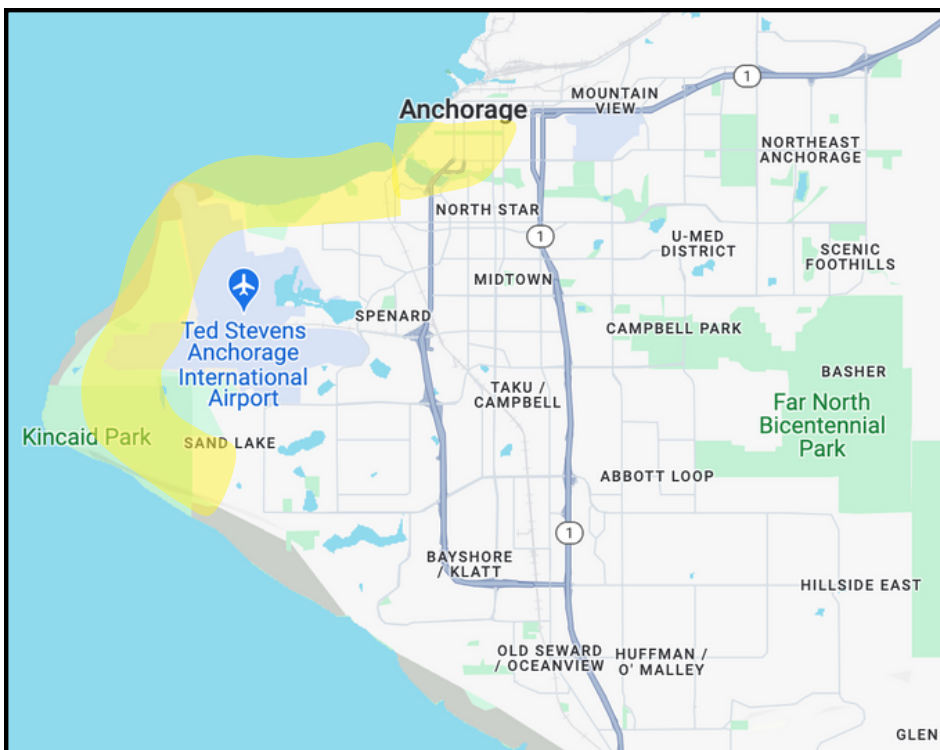
Walkers, runners, bikers, and skiers share the popular Tony Knowles Coastal Trail year-round. It is beloved by locals for its accessibility, scenic ocean views, and connection to Anchorage's many intricate trail systems. Recreational rental & food businesses are available along the trail.



Above: View of the Turnagain Arm from Kincaid Park.

Left: The proposed Coastal District, highlighted in Yellow.

Below: A moose crossing the multi-use Tony Knowles Coastal Trail.



DOWNTOWN

A Night Out on the Town

Home of bars, high-end restaurants, breweries, art galleries, stores, convention centers, theaters, hotels, First Friday, and the Anchorage Museum, Downtown Anchorage is a one stop shop for a weekend on the town. The area stays busy year-round with markets, conventions, and events, including the Summer Solstice Festival and the historic Fur Rondy celebration.

Downtown is often visitors' first taste of Anchorage, whether they arrive by driving in on the Glen Highway or by tour bus or train to stay at one of the many hotels in the area. Downtown is walkable and is connected to Spenard, Midtown, and more via multi-use trails -- check out local Downtown businesses for bike rentals!

Organizations such as the Anchorage Downtown Partnership, Ltd. and Downtown Community Council are active in developing way-finding and maps. Downtown also features several smaller existing districts, including the Mushing District, the Fine Arts District, and the Museum District.



Above: The Performing Arts Center (PAC), featuring local and Broadway shows year-round.

Left: Downtown Community Council Map.

Below: Musher flying down 4th Avenue.



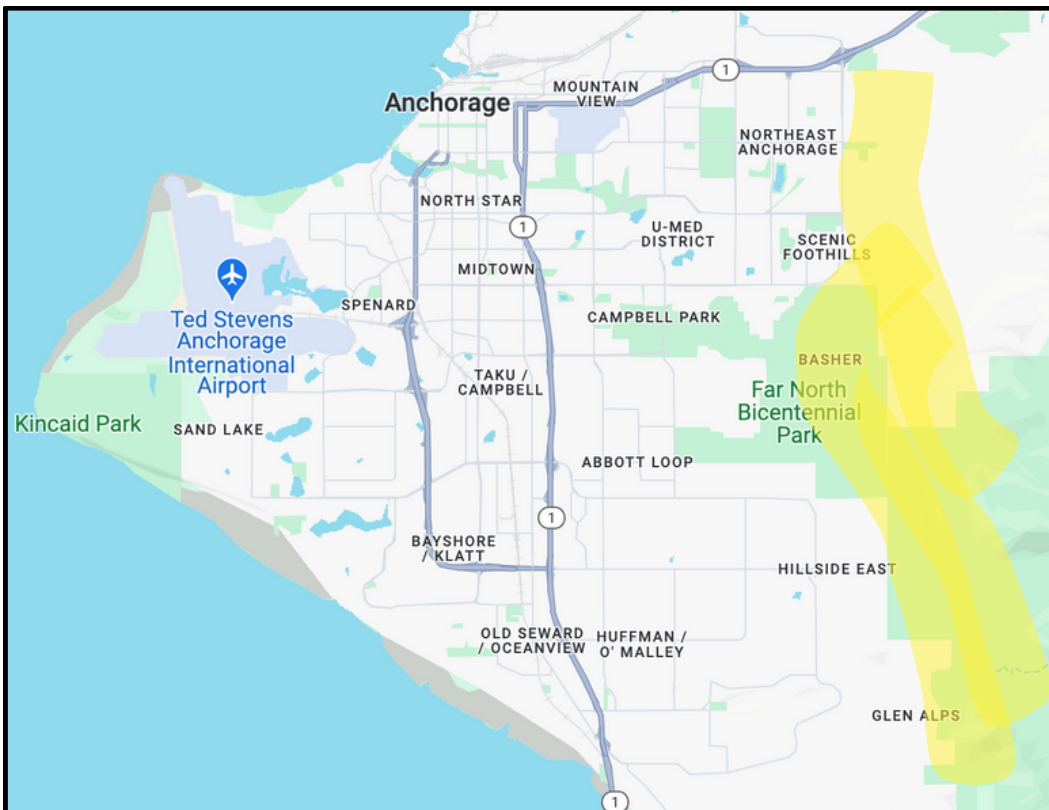
HILLSIDE

Trail Access at Your Doorstep

Characterized by easily accessible trailheads, multi-use trails, and stunning views, the Mountain Access District offers direct access to some of the Anchorage bowl's most beautiful hikes. Including the Basher, Glen Alps, and Rabbit



Lake Trailheads, the Mountain Access District boasts over 50 miles of trails ranging from short strolls to multi-day backpacking trips. Here, there is something for everyone: set up a tent for the night and enjoy Alaska's midnight sun surrounded by turquoise glacial lakes; grab a mountain bike and cruise through forests or rolling tundra; or, if you visit in the winter, hit the slopes at Hilltop Ski Area. Visitors of all abilities and interests will find their ideal outdoor excursion here, less than thirty minutes from the bustle of Midtown Anchorage.



Above: The popular Glen Alps trailhead, with access to Flat Top, Little O'Malley, and Wolverine Peaks.

Left: The proposed Mountain Access District, highlighted in yellow.

Below: View of Mount Susitna and Anchorage from Glen Alps.



MOUNTAIN VIEW

Identified as one of the most diverse in neighborhoods in the United States by the U.S. Census Bureau, you can find a wide range of cuisine, from Peruvian, Hawaiian, Vietnamese, German, Thai & more.



Mountain View mural (Visit Anchorage).

Mountain View is walkable and offers trail connections to surrounding districts and neighborhoods, including downtown, Airport Heights, and Russian Jack. Public parks offer access to green space, play grounds, rugby fields, a disc-golf course, and picnic facilities with public-use grills.

The area is home to a range of cultural institutions and community spaces, from the Mountain View Library and Alaska Museum for Science and Nature to Grow North Farm and the Umoja CoWorking space.



Grow North Farm (ADN).