



In Our Backyard 501(c)(3)
EIN 93-4915440

P.O. Box 91986
Anchorage, AK 99509

info@inourbackyard-ak.org

Mission Statement

In Our Backyard works to provide safe, interim housing and support services for our houseless senior neighbors in Anchorage as they work to obtain permanent housing.

Currently, several churches have partnered with In Our Backyard, including Central Lutheran Church, First Covenant Church, St. John Methodist Church, and Shiloh Baptist Missionary Church, as well as other non profit groups including Christian Health Associates, Catholic Social Services, Lutheran Social Services and the Anchorage Coalition to End Homelessness.

Background:

In Our Backyard is a 501(c)(3) nonprofit founded by members of Central Lutheran Church in Anchorage, Alaska, which is located in the Fairview neighborhood near downtown Anchorage. We have consulted closely with our neighbors and the Fairview Community Council, who are supportive of the program and have asked us to keep them updated.

In Our Backyard is an opportunity to be proactive in addressing the needs of our houseless neighbors. At Central Lutheran, we are called to share God's love with all. We believe in living out God's abundant grace and love through worship, learning, fellowship and service. This project will serve as a model for other faith based organizations, community groups, or businesses to address homelessness. Indeed, other congregations have asked if they might adopt this model if our pilot is successful.

Who and When

Our target community includes single elders or couples who are in need of transitional housing while they wait for permanent housing to become available. Data from the Anchorage Coalition to End Homelessness (ACEH) reveals that 27.1% of people experiencing houselessness in the Anchorage area fall in the age range of 45-64. Similar findings from Lutheran Social Services support the need for targeted transitional housing services for this age group. As we write in April 2024, ACEH is seeking to place individuals who have been using emergency cold weather shelters into transitional or other housing by fall.

Our goal is to welcome residents to the transitional housing in September 2024. We have kept to our timeline (see page 6) for architectural planning, congregational approval and other foundational steps and are now fully engaged in the planned fundraising phase. We are also currently working with the Municipality of Anchorage on zoning and other approvals needed for the project.

Occupant Criteria:

- Age 50 and older
- Singles or Couples
- Ability to live independently
- No alcohol or marijuana use on site
- No substance abuse on site
- Not on sex offender registry
- Minimum monthly fee will be held in savings and returned to occupant when they enter permanent housing
- Signed Occupant Agreement

What?

The project will include 5-6 transitional housing shelters located in the parking lot of Central Lutheran Church, along with a combined restroom and shower facility. The project team is currently weighing a variety of living shelter and bathhouse options to determine which will serve the greatest need at the lowest cost.

Option 1: Pallet Shelter

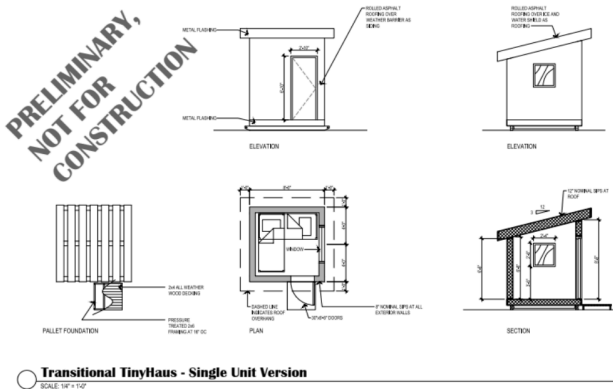
- Shelter Size: 70 square feet
- Estimated Cost: \$17,125 each

- Prefabricated by Pallet Shelter Corporation
- Includes bunk, mattress, and heater



Option 2: Custom Tiny Home

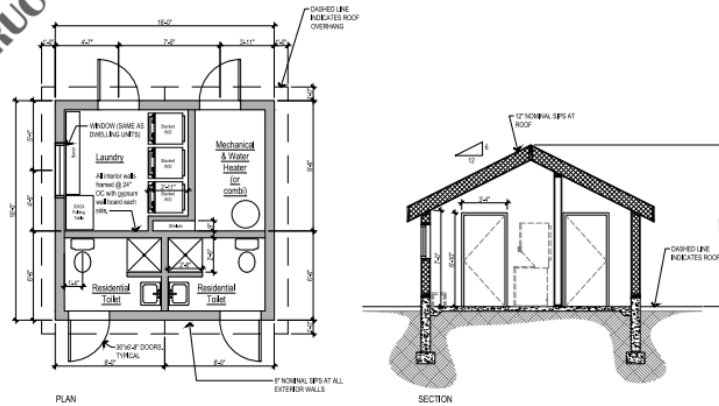
- Shelter Size: 64 square feet
- Estimated Cost: \$6,000 each
- Custom design by Pastor Andy & NVision Architecture, built with SIPS panels
- Includes materials, heater, and mattress pad



Restroom Option 1: Comfort Station built with SIPS panels

- Custom built bathhouse with toilets, showers and laundry, hooked up to city water
- Holding tank for wastewater to be emptied monthly

**PRELIMINARY,
NOT FOR
CONSTRUCTION**



Comfort Station
SCALE: 1/4" = 1'-0"

Restroom Option 2: Trailer Bathroom

- Elk Creek Trailers
- Estimated Cost: \$60,000
- Combined bathroom and shower facilities
- Weatherproof year-round



Where?

The shelters will likely reside on the West side of the upper parking lot at Central Lutheran Church. We are currently working with NVision Architecture to develop a detailed site plan.

Central's midtown location and proximity to public transit, medical offices, the Anchorage Senior Center, and other social services make it the ideal location for a transitional housing facility for our houseless senior neighbors. The mission of In Our Backyard closely aligns with many other programs Central supports, including the Family Emergency Cold Weather Shelter, Helping Hands Closet, Clare House, Foot & Wound Clinic, and Listening Post. With plenty of space available to host the proposed shelters, and provide building office space for case managers, Central is called to share God's love by welcoming unhoused neighbors into our backyard.



Progress

WORKING TOWARDS IMPLEMENTATION

- Christian Health Associates and Lutheran Social Services of Alaska will provide project guidance and mentorship for Board members.
- Anchorage Coalition to End Homelessness (ACEH) will screen potential occupants for individuals who will likely be successful utilizing the interim supportive housing and willingly work with case managers to find permanent housing.
- ACEH, LSSA, or CSS will provide case managers.
- Bean's Cafe will provide free meals.
- Support from St. John Methodist Church, First Covenant Church, Shiloh Baptist Church and other faith groups and local businesses includes program, in-kind, and financial support.
- Space on Central Lutheran's property to place shelters.
- Space in Central Lutheran for an office for a case manager to meet with occupants (10-12 hours per week)
- Funding from grass roots efforts, foundations, grants.

Timeline

10/1/23 - 2/1/24

Approval from Church
Establish a 501c3 - **In Our Backyard**
Site Plan work with Architect
Capital and Operating Budgets completed
Apply for Grants

2/1/24 - 5/1/25

Grant Funding Secured
Permits/Zoning Waiver
Structures Ordered or Built
Bathroom structure ordered

5/1/24 - 9/1/24

Structures built and furnished
Bathroom facility completed
Welcome Occupants