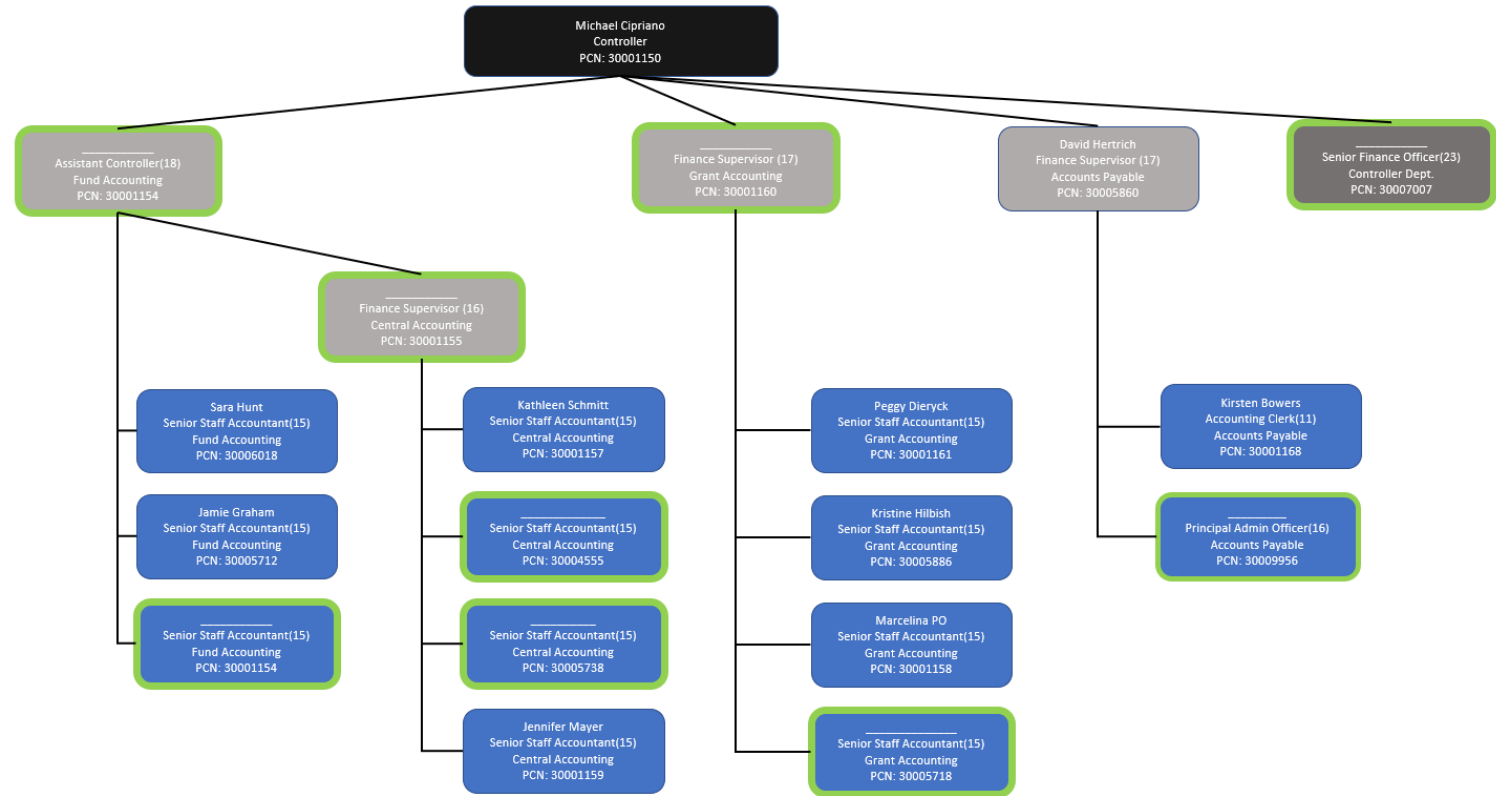


Controller Group

Org Chart
(10/19
positions
filled)



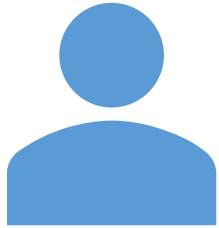
Where we
are at.

Municipality of Anchorage
FY 2022 Audit Timeline

Item Number	Due Date	Item Requested
1	December	Schedule Inventories, begin preliminary discussions on IT data extractions
2	January	Cycle Walkthroughs - CIVIC, Port, SWS, AWWU, ACFR (i.e. all central services and Controller's division specific cycles)
3	February	IT Walkthrough information
4	2/15/2022	Cash & Investments statements, recons, and support including footnotes
5	2/15/2022	Debt and loans / all LTD recons, support, and related footnotes
6	3/1/2022	Preliminary TBs all funds
7	3/1/2022	Preliminary SEFA / SSFA
8	3/1/2022	GL Detail Data Extractions
9	3/15/2022	AR Agings
10	3/15/2022	Revised draft cash, investments, and debt footnotes
11	3/15/2022	Fixed Assets Schedules including Adds / Deletions / CWIP
12	3/31/2022	All remaining request items from PBC request list (i.e. global portal requests for each entity)
13	3/31/2022	ACDA / APCA Issuance
14	* 3/31/2022	PERS / OPEB - all support and footnotes
15	3/31/2022	GASB 87 Leases - all support and footnotes
16	3/31/2022	Draft CIVIC Statements
17	4/1/2022	Final SEFA / SSFA
18	4/1/2022	Final Trial Balances for all funds
19	4/7/2022	APFRS Finalized
20	4/7/2022	BDO to provide initial Port draft
21	4/14/2022	Issue CIVIC
22	4/14/2022	Draft fund statements for ACFR
23	4/14/2022	Draft Water and Wastewater Statements
24	4/14/2022	Draft Port MD&A and statistical information
25	* 4/28/2022	Issue Port
26	5/2/2022	BDO to provide initial SWS draft
27	5/2/2022	Draft GASB 34 workpapers & all cash flows
28	5/2/2022	Water and Wastewater Draft including MD&A and statistical information
29	* 5/15/2022	Issue AWWU
30	5/15/2022	Draft SWS MD&A and statistical information
31	* 5/30/2022	Issue SWS
32	6/3/2022	Final draft of ACFR including all components and SI (schedules, statistical information, MD&A)
33	* 6/30/2022	Issue ACFR and Single Audit

* Depending upon State issuance for PERS / OPEB

Mitigation Steps



Consultants

Wilks Brothers

Altman Rogers

Floy Advisory Group

BDO



Other departments

AWWU

Port

Payroll