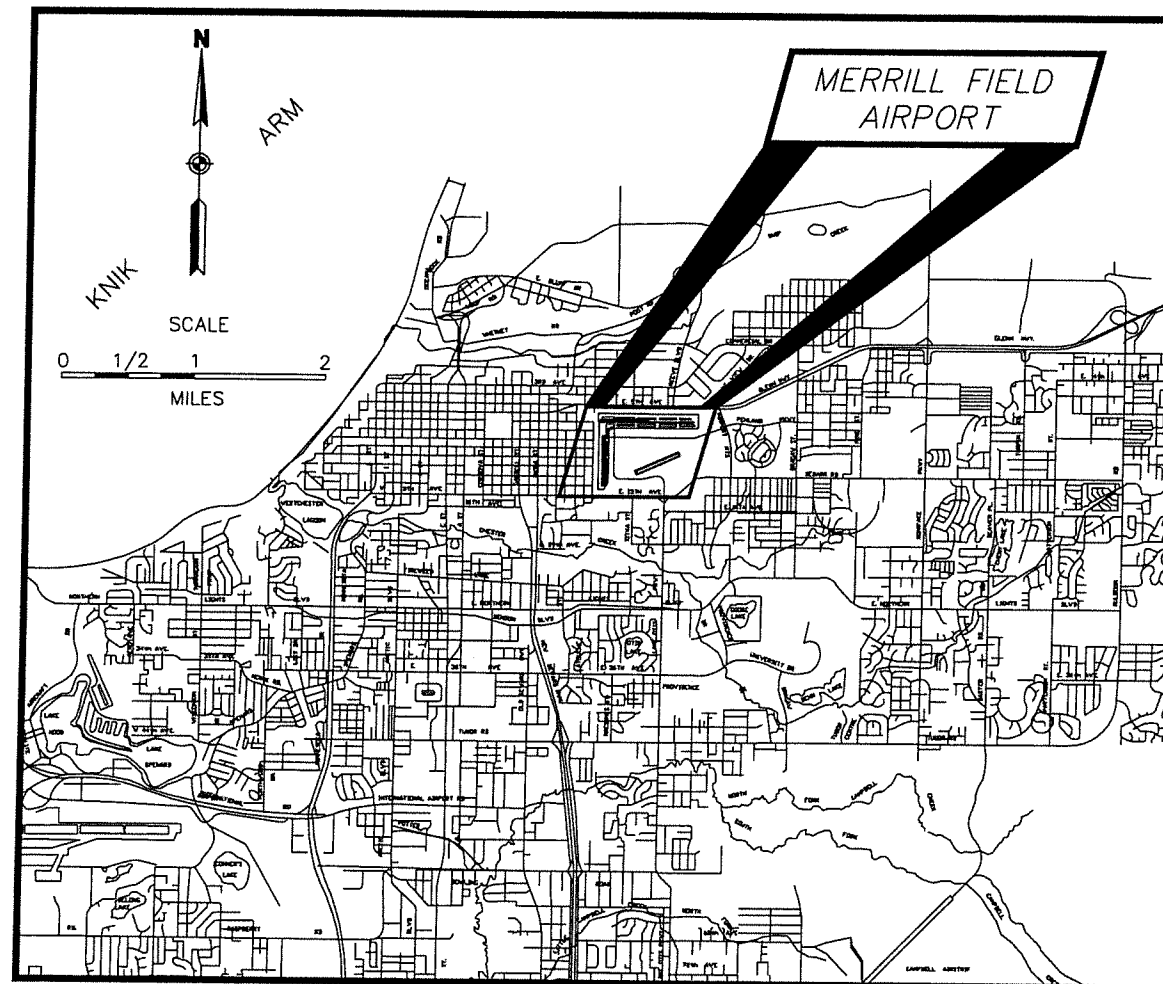


AS-BUILT AIRPORT LAYOUT PLAN MERRILL FIELD AIRPORT ANCHORAGE, ALASKA



LOCATION MAP

SHEET INDEX

- 1 COVER
- 2 AIRPORT LAYOUT DRAWING
- 3 DATA TABLES
- 4 AIRSPACE PLAN
- 5 INNER PORTION APPROACH SURFACE DRAWING RUNWAY 7-25
- 6 INNER PORTION APPROACH SURFACE DRAWING RUNWAY 16-34
- 7 INNER PORTION APPROACH SURFACE DRAWING RUNWAY 5-23
- 8 TERMINAL AREA PLAN
- 9 AIRPORT ACCESS PLAN
- 10 LAND USE PLAN
- 11 PROPERTY MAP - EXHIBIT "A"
- 12 LAND OCCUPANCY DRAWING
- 13 LAND OCCUPANCY TABLE

UPDATED BY:



R&M CONSULTANTS, INC.
9101 Vanguard Drive, Anchorage, Alaska 99507

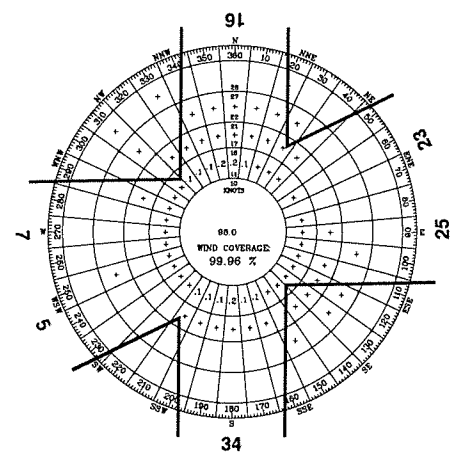
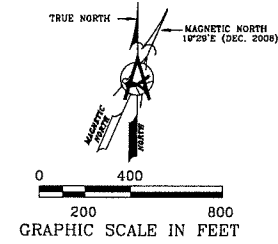
Paul Bowers

DATE **7.7.17**

APPROVED BY: PAUL BOWERS, AIRPORT MANAGER

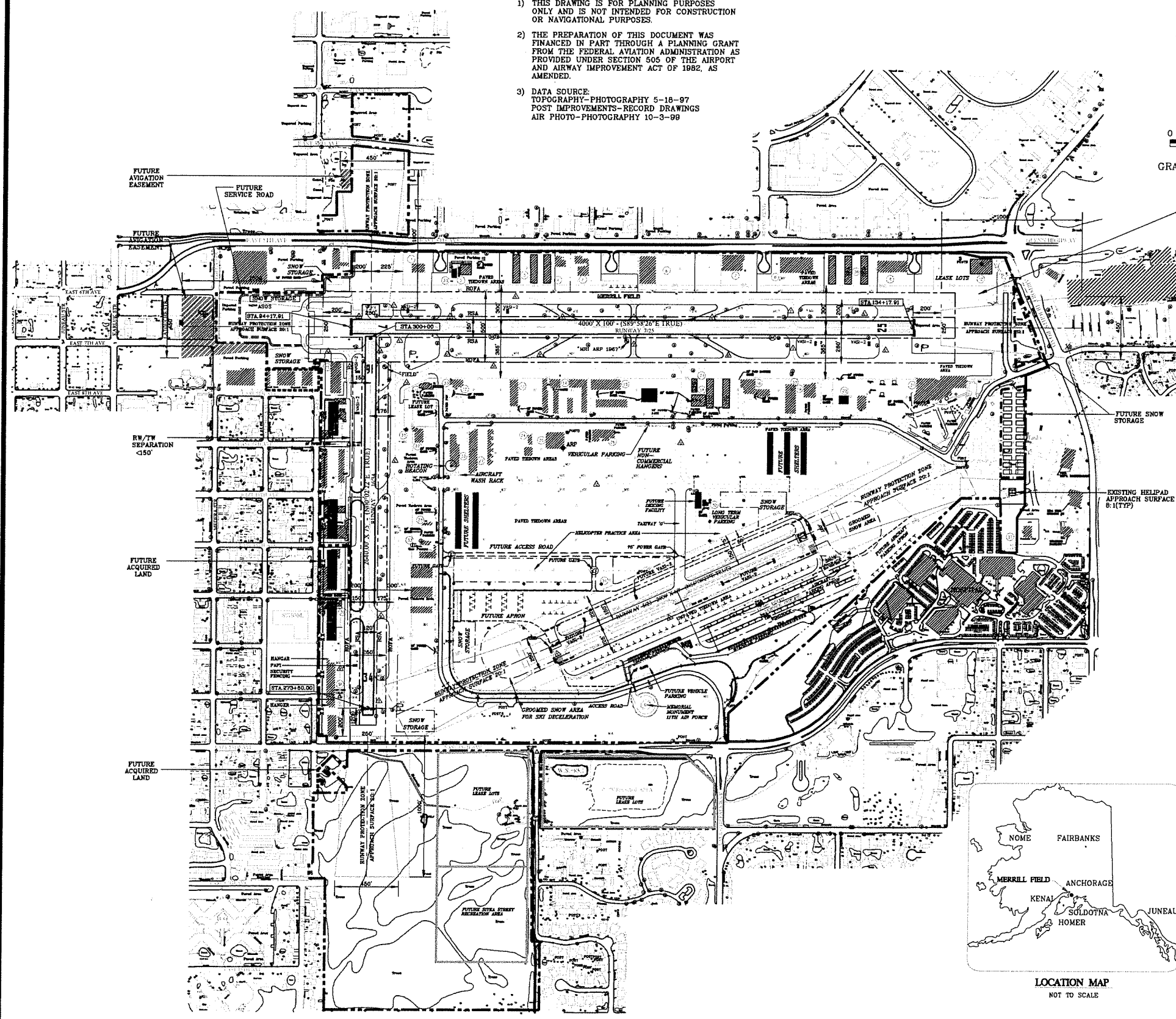
ACCEPTED FOR FAA = *P. Math* 7/25/17

- NOTE:
- 1) THIS DRAWING IS FOR PLANNING PURPOSES ONLY AND IS NOT INTENDED FOR CONSTRUCTION OR NAVIGATIONAL PURPOSES.
 - 2) THE PREPARATION OF THIS DOCUMENT WAS FINANCED IN PART THROUGH A PLANNING GRANT FROM THE FEDERAL AVIATION ADMINISTRATION AS PROVIDED UNDER SECTION 505 OF THE AIRPORT AND AIRWAY IMPROVEMENT ACT OF 1982, AS AMENDED.
 - 3) DATA SOURCE:
TOPOGRAPHY-PHOTOGRAPHY 5-18-97
POST IMPROVEMENTS-RECORD DRAWINGS
AIR PHOTO-PHOTOGRAPHY 10-3-98



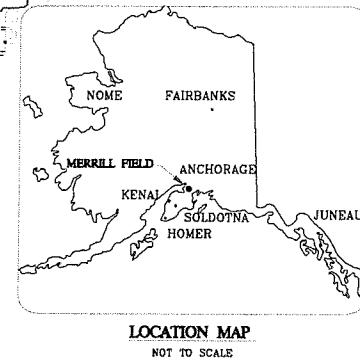
WIND COVERAGE:	10.5 KNOTS	13 KNOTS
RUNWAY 7-25:	98.39%	99.02%
RUNWAY 16-34:	99.77%	99.90%
RUNWAY 5-23:	98.51%	99.20%
ALL RUNWAYS:	99.96%	99.99%
CALM AND LESS THAN 3 KNOTS = 59.4%		

ALL-WEATHER WIND ROSE
WEATHER DATA FROM MERRILL FIELD AIRPORT
1988-1997



LEGEND		
EXISTING	FUTURE	
---	---	AIRPORT PROPERTY LINE
---	---	AVIGATION EASEMENT
---	---	BUILDING RESTRICTION LINE (BRL)
---	---	RUNWAY SAFETY AREA (RSA)
---	---	RUNWAY OBJECT FREE AREA (ROFA)
---	---	SECURITY FENCING
---	---	WINDSOCK
---	---	AUTOMATED SURFACE OBSERVING SYSTEM
---	---	RUNWAY END IDENTIFIER LIGHTS
---	---	VISUAL APPROACH SLOPE INDICATOR
---	---	TAXIWAY IDENTIFIER
---	---	COMPASS ROSE
---	---	RUNWAY PROTECTION ZONE
---	---	HELIPAD
---	---	AIRPORT REFERENCE POINT (ARP)
---	---	RUNWAY MONUMENT
---	---	HORIZONTAL AND VERTICAL CONTROL
---	---	SECTION CORNERS
---	---	INDEX CONTOURS
---	---	ROADWAY (UNPAVED)
---	---	ROADWAY (PAVED)
---	---	BUILDINGS
---	---	REMOVE OR RELOCATE BUILDING
---	---	FUTURE TAXIWAY LINES
---	---	RUNWAY APRON, TAXIWAY LIGHTING
---	---	POLE
---	---	LIGHTPOLE
---	---	UTILITY POLE
---	---	POST
---	---	MANHOLE
---	---	HYDRANT
---	---	SIGN
---	---	TREE LINE
---	---	TREE
---	---	SWAMP
---	---	CULVERT
---	---	CATCH BASIN
---	---	GATE
---	---	DISTANCE TO GO SIGNS
---	---	RELOCATED BEACON
---	---	GPS MONUMENT

EXISTING FACILITIES	
NO.	FACILITY
1	FOX PAPA LLC/ALYESKA HELICOPTER
2	LAKE AND PEN AIR
3	SILPSTREAM HANGARS A & B & C
4	CIVIL AIR PATROL
5	FAA AIR TRAFFIC CONTROL TOWER
6	PARAMOUNT INVESTMENT
7	HILLER LLS/WINGS OF FREEDOM
8	NORTHLAND HANGAR DBA REEVE AUTOMOTIVE
9	NORTH EDGE LLC
10	STODDARD AERO SERVICES, INC.
11	MRI AIRPORT MANAGEMENT OFFICE
12	MICHAEL B. SPERNAK & MARITA C. CROSBY
13	DIMOND D. PARTNERS
14	DAN'S HANGARS
15	PACIFIC ALASKAN AIRWAYS LLC
16	ALASKA AIR TRANSIT
17	ACE HANGARS A,B,C,D
18	AERO TWIN, INC.
19	A & W SERVICES
20	UNIVERSITY OF ALASKA ANCHORAGE
21	UNIVERSITY OF ALASKA ANCHORAGE
22	AERO CENTER PARTNERSHIP
23	MUNICIPALITY OF ANCHORAGE
24	A.C.E. FLYERS, INC. DBA JAY-HAWK AIR
25	EVERGREEN HELICOPTERS OF ALASKA, INC.
26	AERO METRIC, INC.
27	T-HANGARS UNITS/20 INDIVIDUAL LEASE LOTS
28	EXECUTIVE HANGARS
29	AERO TECH FLIGHT SCHOOL INC.
30	MUNICIPALITY OF ANCHORAGE GAS FLARE
31	AIRPORT DEVELOPMENT, INC.
32	AAA, INC.
33	FUEL ISLAND
34	GAS COLLECTION CONTROL HOUSE
35	NOT USED
36	CHUGACH HANGARS A & B & C
37	MEDIVAC STAGGING (NOT ON AIRPORT)
38	JANSSEN HANGARS



DJG	11/09/12	ASBUILT UPDATE
DJG	07/08/08	NEW RUNWAY NUMBERS & 5TH AVE DESIGN
DJG	12/30/08	AIRPORT REDLINES 9-16-2008
DJG	11/09/12	PROPERTY DATA UPDATE
CS	2/9/17	ASBUILT RECENT CONSTRUCTION

FAA AIRSPACE CASE NO.: 00-AAL-149-NRA
FAA APPROVAL LETTER DATED: _____
BY: _____
FAA ALASKA REGION, AIRPORTS DIVISION

USKH
ANCHORAGE • WASILLA • JUNEAU • FAIRBANKS
2515 'A' Street • Anchorage, Alaska 99503
Phone (907) 276-4245 FAX (907) 258-4653

MERRILL FIELD AIRPORT
ANCHORAGE, AK
AIRPORT LAYOUT DRAWING

PLOT DATE: 5/31/2017 12:22 PM
FILE NAME: C:\pwworking\src\d1759248\MRI-ALP02-ULT.dwg

RUNWAY DATA

RUNWAY (SEE NOTE 5)	RUNWAY 7-25		RUNWAY 16-34		RUNWAY 5-23	
	EXISTING	ULTIMATE	EXISTING	ULTIMATE	EXISTING	ULTIMATE
EFFECTIVE GRADIENT (%)	0.25%	SAME	0.26%	SAME	0.26%	SAME
10.5 KNOT WIND COVERAGE	98.39%	SAME	99.77%	SAME	98.51%	SAME
RUNWAY SURFACE	ASPHALT	SAME	ASPHALT	SAME	GRAVEL	SAME
PAVEMENT STRENGTH	SW 50,000/DW 80,000	SAME	SW 20,000	SAME	< 12,500	SAME
APPROACH SURFACES (WITH VISIBILITY MINIMUMS)	20:1	SAME	20:1	SAME	20:1	SAME
	VISUAL	SAME	VISUAL	SAME	VISUAL	SAME
RUNWAY LIGHTING	MIRL	SAME	MIRL	SAME	MIRL	SAME
RUNWAY MARKING	PRECISION	SAME	VISUAL	SAME	NONE	SAME
RUNWAY VISUAL AND INSTRUMENT NAVIGATION AIDS	GPS-A REIL/VASI-2	SAME	REIL, PAPI-2 R/W 34	SAME	REIL	VASI-2
	R/W 7 AND 25		REIL, VASI-2 R/W 16	R/W 16 AND 34		R/W 5 AND 23
RUNWAY SAFETY AREA	4600 X 150	SAME	3044 X 120	3044 X 120	2480 X 120	SAME
RUNWAY DIMENSION	4000 X 100	SAME	2640 X 75	SAME	2000 X 60	SAME
TAXIWAY SURFACE	ASPHALT	SAME	ASPHALT	SAME	GRAVEL	SAME
TAXIWAY LIGHTING	MITL	SAME	MITL	SAME	NONE	SAME
RUNWAY END COORDINATES**	7	LATITUDE 61°12'57.25" N	SAME			
		LONGITUDE 149°51'11.78" W	SAME			
25		LATITUDE 61°12'57.24" N	SAME			
		LONGITUDE 149°49'50.10" W	SAME			
RUNWAY END COORDINATES**	16	LATITUDE	61°12'56.46" N	SAME		
		LONGITUDE	149°51'09.04" W	SAME		
34		LATITUDE	61°12'30.46" N	SAME		
		LONGITUDE	149°51'09.10" W	SAME		
RUNWAY END COORDINATES**	5	LATITUDE			61°12'34.82" N	SAME
		LONGITUDE			149°50'42.51" W	SAME
23		LATITUDE			61°12'42.79" N	SAME
		LONGITUDE			149°50'05.17" W	SAME
RUNWAY PROTECTION ZONE DIMENSIONS	LENGTH	1000	SAME	1000	SAME	1000
	INNER WIDTH	250	500	250	SAME	250
	OUTER WIDTH	450	700	450	SAME	450
	AREA	8.03 ACRES	SAME	8.03 ACRES	SAME	8.03 ACRES
OBJECT FREE AREA	4600 X 500	SAME	3120 X 250	SAME	2480 X 250	SAME
OBSTACLE FREE ZONE	4400 X 250	SAME	3040 X 250	SAME	2400 X 250	SAME
BUILDING RESTRICTION LINE	300'NORTH 365' SOUTH	SAME	300'EAST 200'WEST	SAME	225'	SAME
RUNWAY END STATIONING	94+17.91/134+17.91	SAME	300+00/273+60	SAME	10+00/30+00	SAME
RUNWAY END ELEV. (NAD83)						
RUNWAY 7/25	124.4/136.9	SAME				
RUNWAY 16/34			124.4/117.1	SAME		
RUNWAY 5/23					128.50/133.65	SAME
RUNWAY TOUCHDOWN ELEV. (TDZE)						
RUNWAY 7/25	***127.6/136.9	SAME				
RUNWAY 16/34			N/A	N/A		
RUNWAY 5/23					N/A	N/A

*** 1000' FROM THRESHOLD

TAXIWAY DATA

TAXIWAY DESIGNATION	A	B	C	D	E	F	G	H	J	K	L	M	N	P	Q	R	S	T	W
TAXIWAY WIDTH	75	35	60	75/65	35	35	75	35	75/50	190/230	35	35/100	75	N/A	65	50	200	35	35
TAXIWAY OBJECT FREE AREA WIDTH	131+	89+	89+	131+	131+	131+	131+	131+	131+	N/A	131+	89+	131+	N/A	131+	89+	N/A	131+	131+
TAXIWAY SAFETY AREA WIDTH	79+	49+	49+	79+	79+	79+	79+	79+	79+	N/A	79+	49+	79+	N/A	79+	79+	N/A	79+	79+
TAXIWAY ULTIMATE WIDTH												100							

- * FOR SMALL AIRPLANES (<12,500 LBS GROSS TAKE OFF WEIGHT)
- ** NORTH AMERICAN DATUM OF 1983 (NAD 83)

AIRPORT DATA

	EXISTING	ULTIMATE
AIRPORT ELEVATION (MSL)	136.9	SAME
AIRPORT REFERENCE POINT (A.R.P.)**	LATITUDE 61°12'48.77" N	SAME
	LONGITUDE 149°50'40.95" W	SAME
MEAN TEMPERATURE HOTTEST MONTH	68° (JULY)	SAME
AIRCRAFT DESIGN GROUP		
RUNWAY 7-25	II (SMALL)	SAME
RUNWAY 16-34	I	SAME
RUNWAY 5-23	I	SAME
AIRCRAFT APPROACH CATEGORY		
RUNWAY 7-25	B	SAME
RUNWAY 16-34	B	SAME
RUNWAY 5-23	A	SAME
AIR TRAFFIC CONTROL TOWER	YES	SAME
AIRPORT CATEGORY AND ROLE	PRIMARY COMMERCIAL SERVICE AND G.A. RELIEVER	SAME
AIRPORT SURVEY MONUMENTATION **	NAD 83	SAME
GPS MONUMENT "FIELD"	LATITUDE 61°12'54.46"N	
	LONGITUDE 149°51'06.96"W	SAME
	ELEVATION 123.7 FT.	
GPS MONUMENT "MRI-ARP-1967"	LATITUDE 61°12'56.26"N	
	LONGITUDE 149°50'31.79W	SAME
	ELEVATION 129.9 FT.	
GPS-A TO AIRPORT WITH CIRCLING MINIMUMS	600'/1 MILE	SAME

NOTES:

1. OBSTACLE FREE ZONE 250 FEET WIDE FOR SMALL AIRCRAFT.
2. THERE ARE NO OBSTACLE FREE ZONE PENETRATIONS.
3. THERE ARE NO THRESHOLD SITING SURFACE OBJECT PENETRATIONS.
4. THE RUNWAYS ARE LIMITED TO USE BY AIRCRAFT OF 12,500 POUNDS OR LESS EXCEPT BY PRIOR PERMISSION OF AIRPORT.

NON STANDARD CONDITIONS

DESCRIPTION	STANDARD	ACTUAL	DISPOSITION
RUNWAY 7-25 TO TAXIWAY A	240	200	REMAIN
RUNWAY 16-34 RSA LENGTH	3120	3044	CONDUCTED RSA ANALYSIS AS PART OF A.L.P. 3-02-0015-050-2010 RUNWAY 16/34 REHABILITATION PROJECT. RSA WAS EXTENDED 44 FEET
RUNWAY 34 RSA LENGTH BEYOND THRESHOLD	240	164	REMAIN
TAXIWAY 16/34 HOLD LINES	125	100	REMAIN

MODIFICATIONS TO STANDARDS

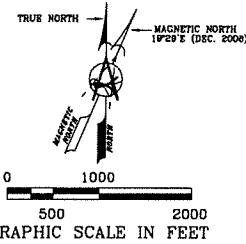
DESCRIPTION	STANDARD	ACTUAL	DISPOSITION
RUNWAY 25 WIND CONE			FAA APPROVED 6/23/99
TAXIWAY 5/23 HOLD LINES	125	100	FAA APPROVED 8/22/05

DJG	11/09/12	ASBUILT UPDATE
DJG	07/08/08	NEW RUNWAY NUMBERS & 5TH AVE DESIGN
DJG	12/30/08	AIRPORT REDLINES 9-16-2008
DJG	11/09/12	PROPERTY DATA UPDATE
CS	2/9/17	ASBUILT RECENT CONSTRUCTION

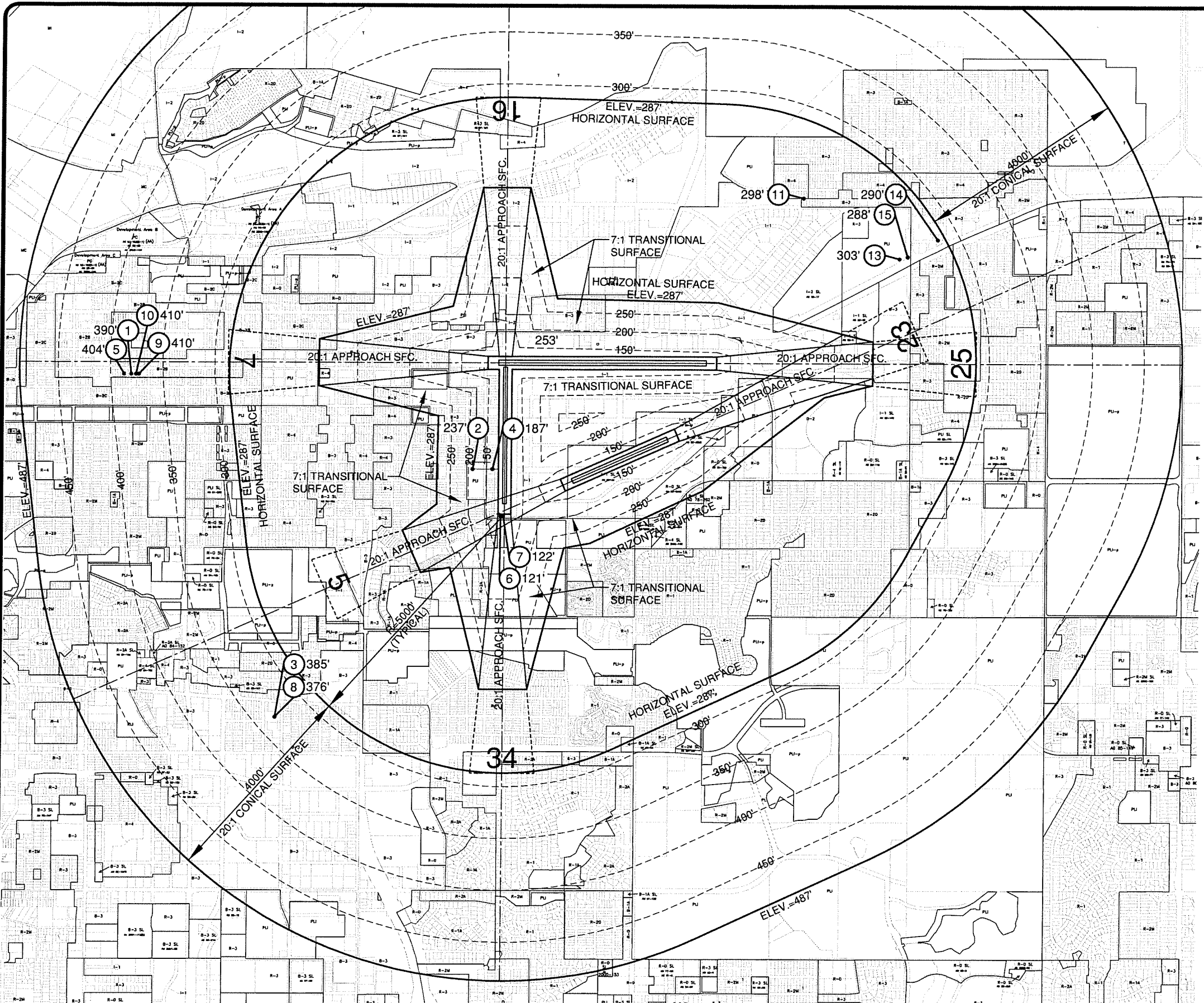
FAA AIRSPACE CASE NO.: 00-AAL-149-NRA
 FAA APPROVAL LETTER DATED: _____
 BY: _____
 FAA ALASKA REGION, AIRPORTS DIVISION

USKH
 ANCHORAGE • WASILLA • JUNEAU • FAIRBANKS
 2515 'A' Street • Anchorage, Alaska 99503
 Phone (907) 276-4245 FAX (907) 258-4653

MERRILL FIELD AIRPORT
 ANCHORAGE, AK
 DATA TABLES



NOTE: BASE SHEET FOR THIS DRAWING IS M.O.A. ZONING MAPS



OBSTRUCTION DATA				
No.	DESCRIPTION	TOP ELEV	PART 77 SURFACE PENETRATION	DISPOSITION OF OBSTRUCTION
1	ANT. ON BLDG.	390'	+10'	NO LIGHTING
2	ANT. ON BLDG.	237'	+46'	NO LIGHTING
3	ANT. TOWER ON BLDG.	385'	+53'	NO LIGHTING
4	ANT. ON BLDG.	187'	+51'	NO LIGHTING
5	ANT. ON BLDG.	404'	+17'	NO LIGHTING
6	STREET LIGHT	121'	+1'	NO LIGHTING
7	STREET LIGHT	122'	+2'	NO LIGHTING
8	ANT. ON BLDG.	376'	+44'	NO LIGHTING
9	ANT. TOWER ON BLDG.	410'	+37'	MARKED AND LIGHTED
10	ANT. TOWER ON BLDG.	410'	+34'	MARKED AND LIGHTED
11	TOWER	298'	+11'	NO LIGHTING
12	ANT. ON TOWER	253'	+88'	NO LIGHTING
13	UNUSED	---	---	---
14	HIGH TOWER	290'	+3'	MARKED AND LIGHTED
15	HIGH TOWER	288'	+1'	MARKED AND LIGHTED

SEE INNER PORTION-APPROACH SURFACE DRAWINGS FOR CLOSE-IN OBSTRUCTIONS
 ANT=ANTENNA, OL=OBSTRUCTION LIGHTED, TWR=TOWER, BLDG=BUILDING

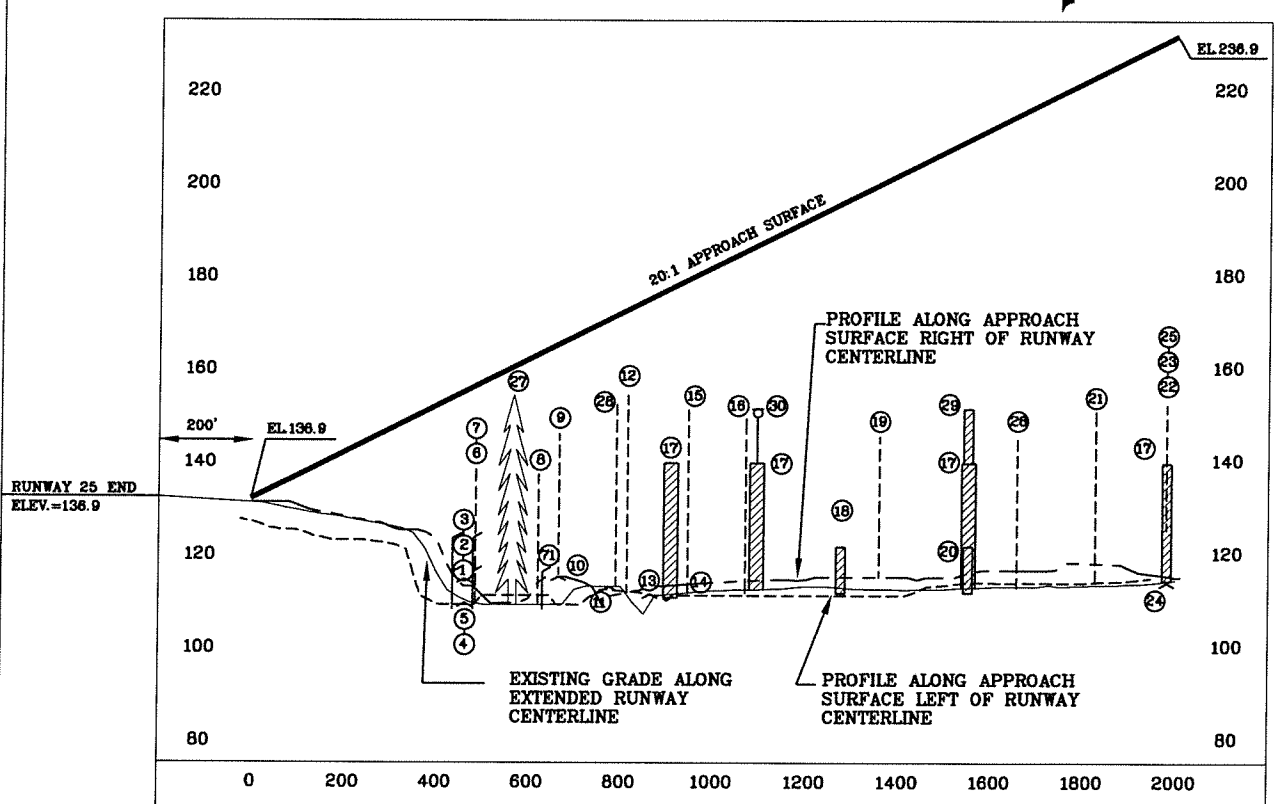
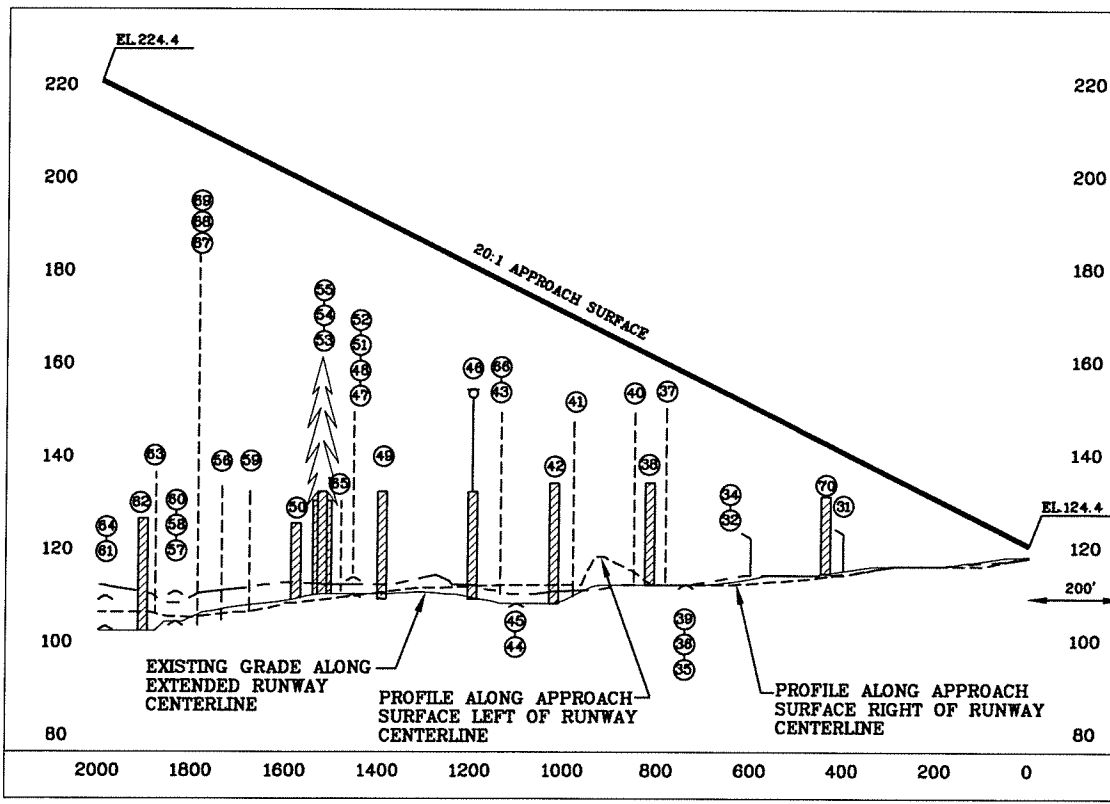
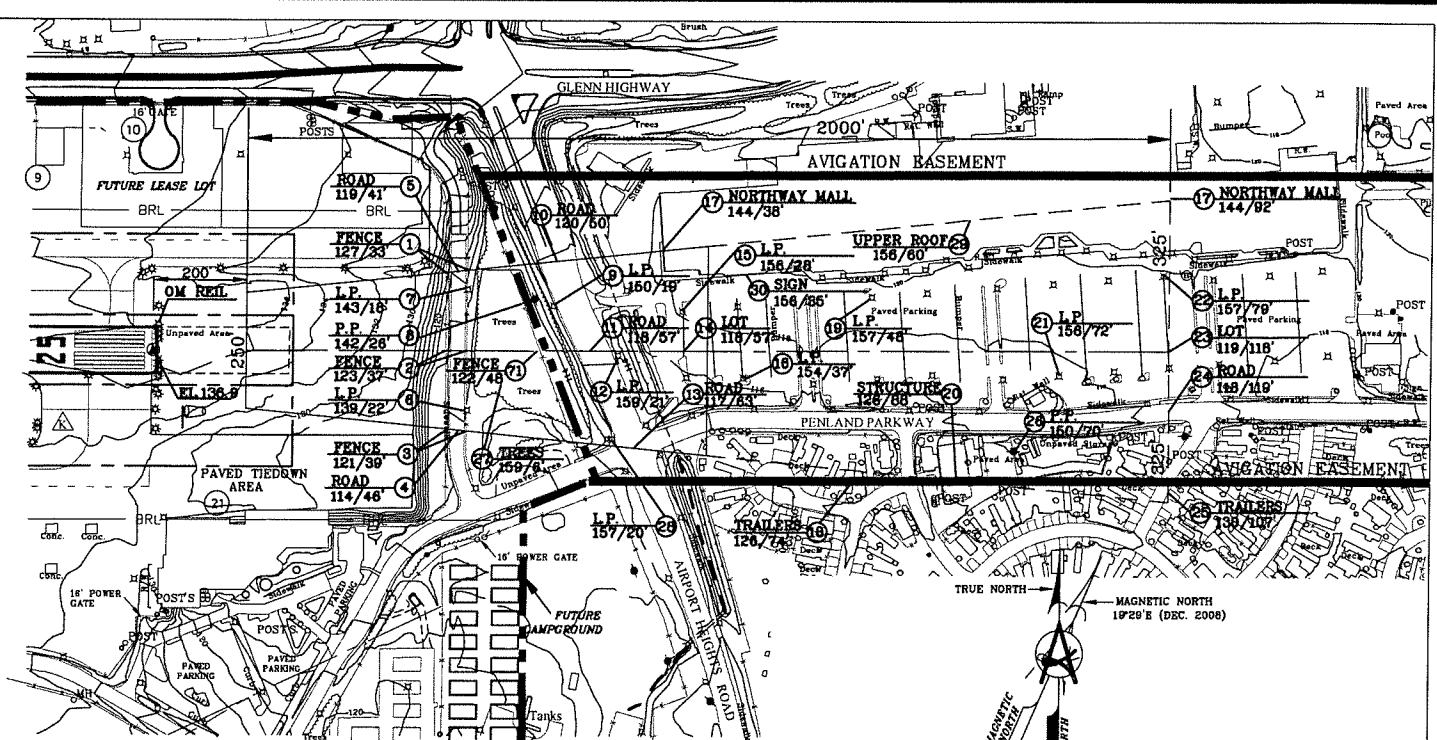
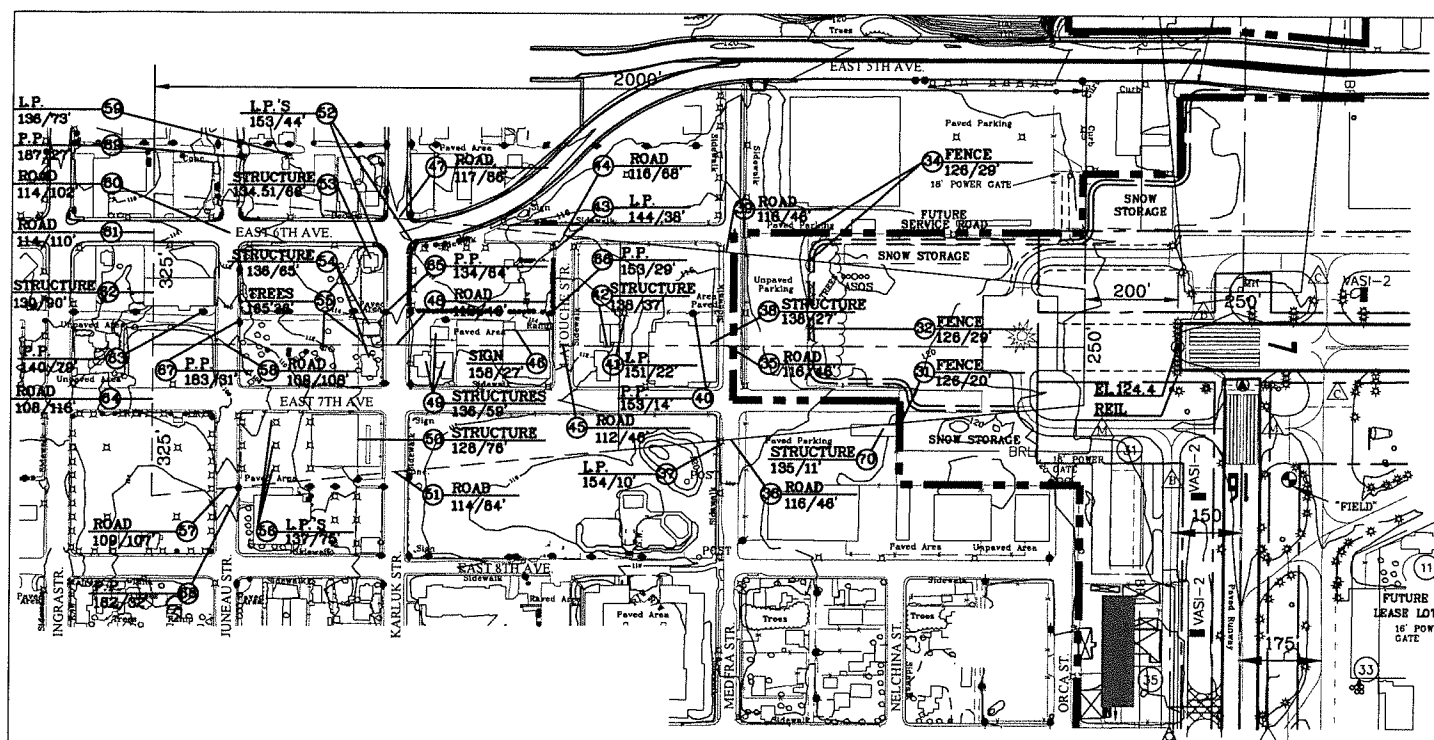
PLOT DATE: 9/21/2016 12:31 PM
 FILE NAME: C:\pwworking\seo\1759248\WRI-ALP04-ULT.dwg

DJG	11/09/12	ASBUILT UPDATE
DJG	07/08/08	NEW RUNWAY NUMBERS & 5TH AVE DESIGN
DJG	12/30/08	AIRPORT REDLINES 9-16-2008
DJG	11/09/12	PROPERTY DATA UPDATE
CS	9/19/16	ASBUILT RECENT CONSTRUCTION

FAA AIRSPACE CASE NO.: 00-AAL-149-NRA
 FAA APPROVAL LETTER DATED: _____
 BY: _____
 FAA ALASKA REGION, AIRPORTS DIVISION

USKH
 ANCHORAGE • WASILLA • JUNEAU • FAIRBANKS
 2515 'A' Street • Anchorage, Alaska 99503
 Phone (907) 276-4245 FAX (907) 258-4653

MERRILL FIELD AIRPORT
 ANCHORAGE, AK
 AIRSPACE PLAN

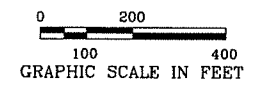


RUNWAY 7 APPROACH SURFACE

RUNWAY 25 APPROACH SURFACE

LEGEND

- ② FEATURE ELEVATION/VERTICAL CLEARANCE TO APPROACH SURFACE
- P.P. POWER POLE
- L.P. LIGHT POLE
- T/W TAXIWAY



NOTE: NO PENETRATIONS

RUNWAY 7 OBSTRUCTION DATA				
No.	DESCRIPTION	TOP ELEV	APPROACH SURFACE PENETRATION	DISPOSITION OF OBSTRUCTION
NO PENETRATIONS				

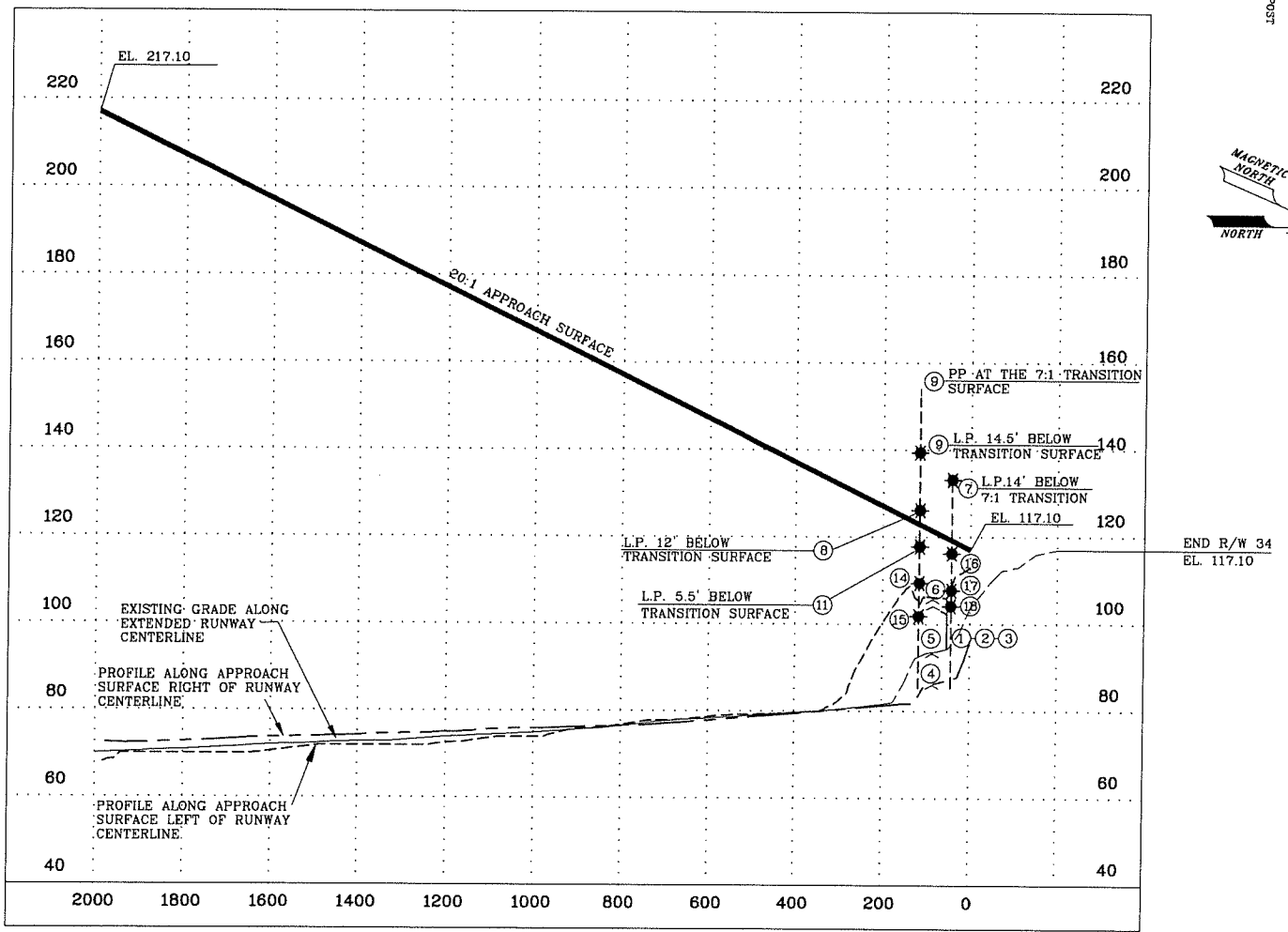
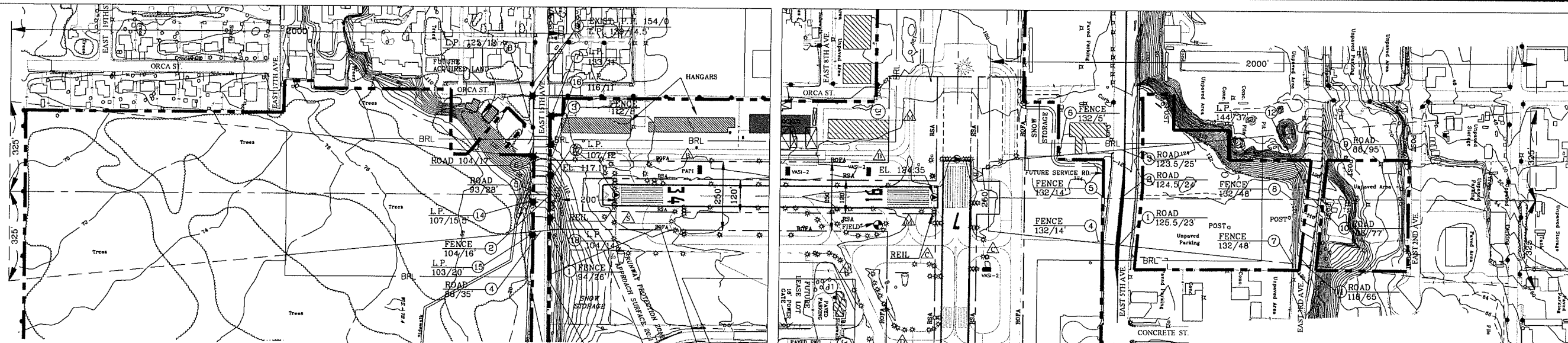
DJG	11/09/12	ASBUILT UPDATE
DJG	07/08/08	NEW RUNWAY NUMBERS & 5TH AVE DESIGN
DJG	12/30/08	AIRPORT REDLINES 9-16-2008
DJG	11/09/12	PROPERTY DATA UPDATE
CS	9/19/16	ASBUILT RECENT CONSTRUCTION

FAA AIRSPACE CASE NO.: 00-AAL-149-NRA
 FAA APPROVAL LETTER DATED: _____
 BY: _____
 FAA ALASKA REGION, AIRPORTS DIVISION

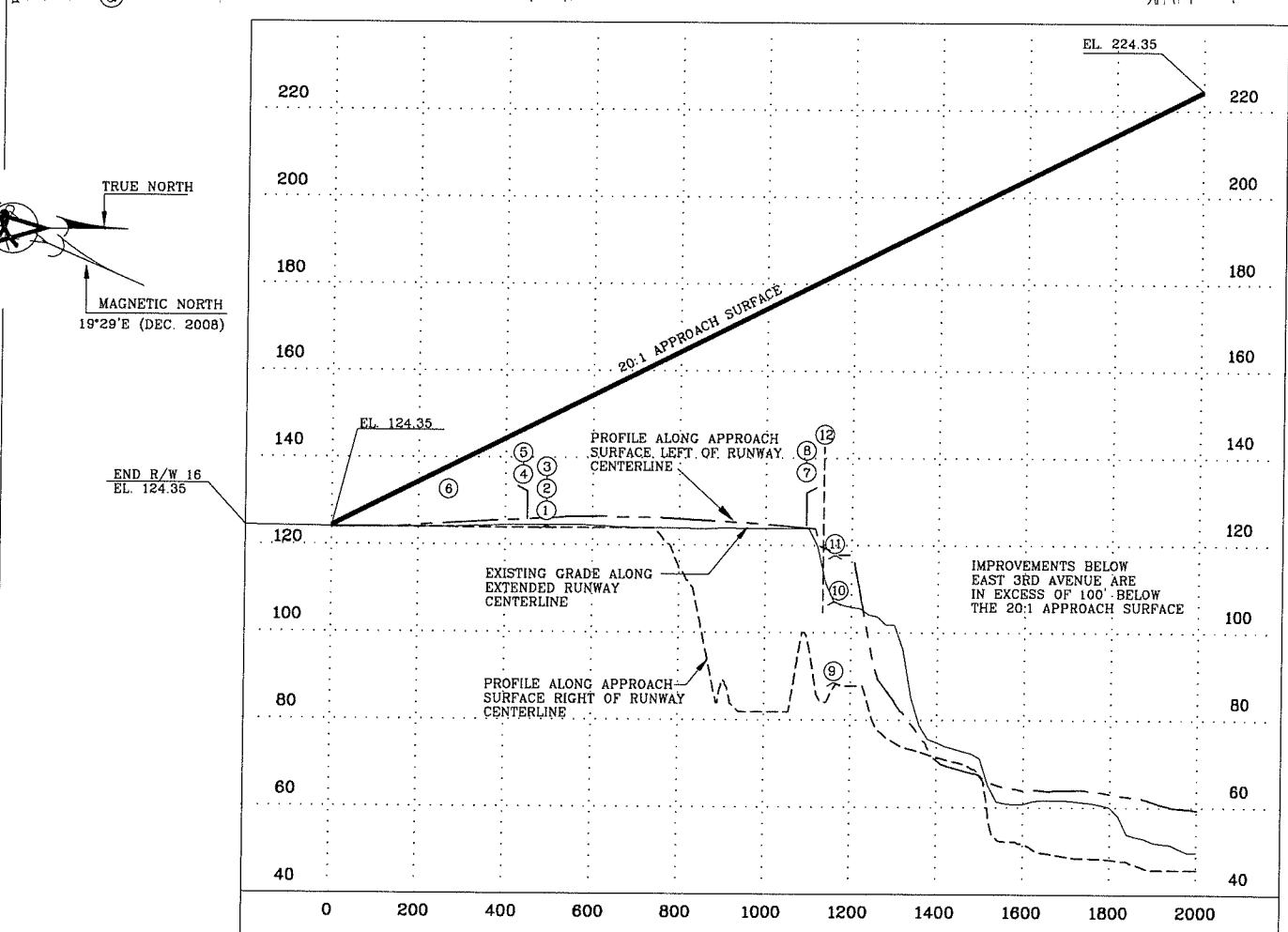
USKH
 ANCHORAGE • WASILLA • JUNEAU • FAIRBANKS
 2515 'A' Street • Anchorage, Alaska 99503
 Phone (907) 276-4245 FAX (907) 258-4653

MERRILL FIELD AIRPORT
 ANCHORAGE, AK
 INNER PORTION-
 APPROACH SURFACE DRAWING
 RUNWAY 7/25

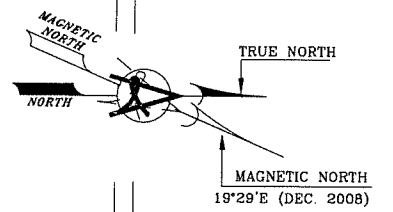
PLOT DATE: 4/27/2017 1:14 PM
 FILE NAME: C:\pwworking\aed\1759248\MRI-ALP05-ULT.dwg



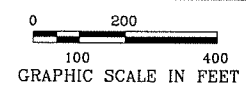
RUNWAY 34 APPROACH SURFACE



RUNWAY 16 APPROACH SURFACE



- LEGEND**
- ② FEATURE ELEVATION/VERTICAL CLEARANCE TO APPROACH SURFACE
 - P.P. POWER POLE
 - L.P. LIGHT POLE
 - T/W TAXIWAY
 - ★ FUTURE LIGHT POLE



NOTE: NO PENETRATIONS

RUNWAY 34 OBSTRUCTION DATA

No.	DESCRIPTION	TOP ELEV	APPROACH SURFACE PENETRATION	DISPOSITION OF OBSTRUCTION
	NO PENETRATIONS			

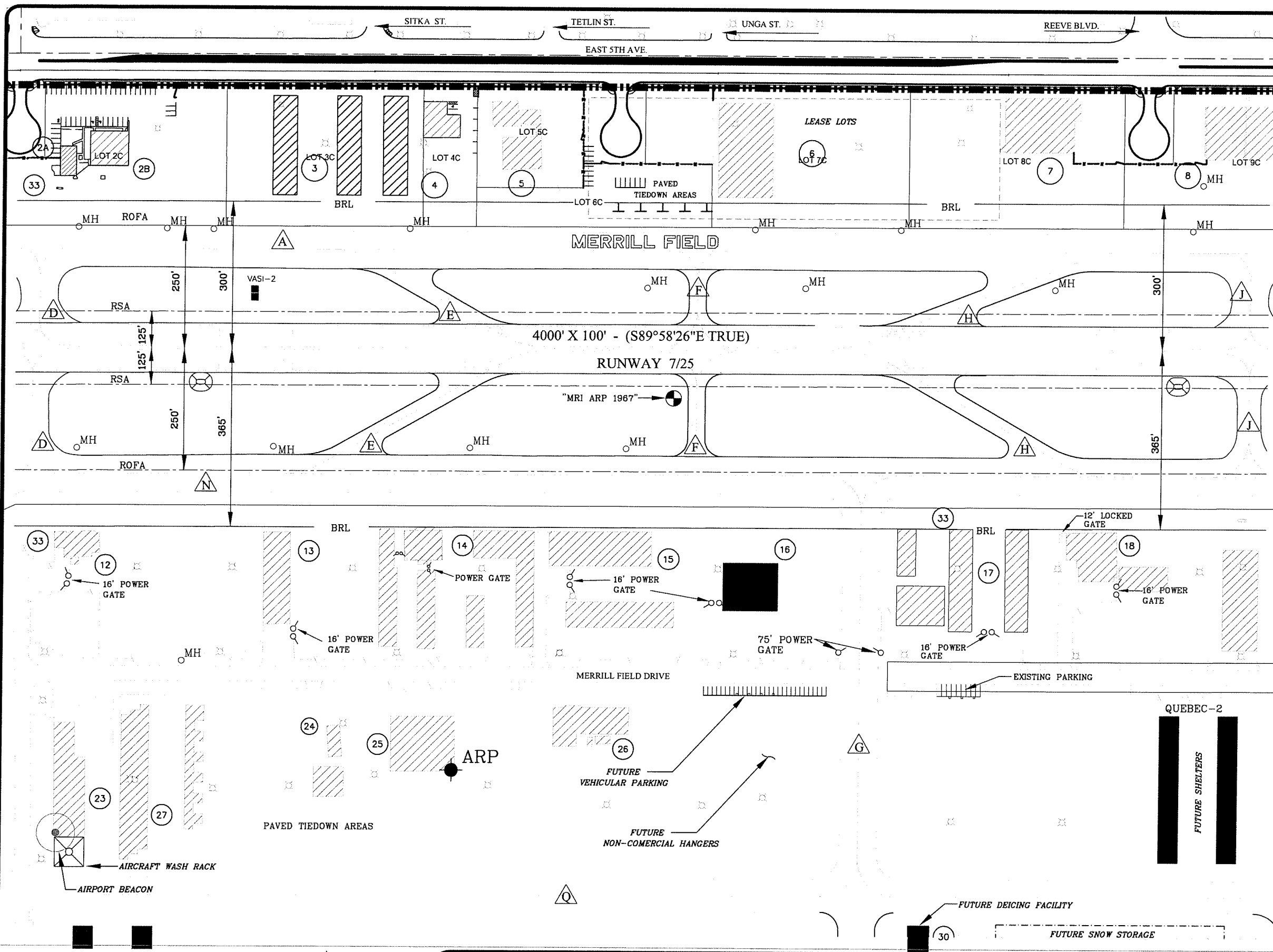
DJG	11/09/12	ASBUILT UPDATE
DJG	07/08/08	NEW RUNWAY NUMBERS & 5TH AVE DESIGN
DJG	12/30/08	AIRPORT REDLINES 9-16-2008
DJG	11/09/12	PROPERTY DATA UPDATE
CS	9/19/16	ASBUILT RECENT CONSTRUCTION

FAA AIRSPACE CASE NO.: 00-AAL-149-NRA
 FAA APPROVAL LETTER DATED: _____
 BY: _____
 FAA ALASKA REGION, AIRPORTS DIVISION

USKH
 ANCHORAGE • WASILLA • JUNEAU • FAIRBANKS
 2515 'A' Street • Anchorage, Alaska 99503
 Phone (907) 276-4245 FAX (907) 258-4653

MERRILL FIELD AIRPORT
 ANCHORAGE, AK
 INNER PORTION-
 APPROACH SURFACE DRAWING
 RUNWAY 16/34

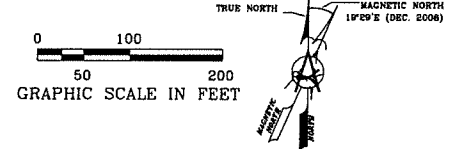
PLOT DATE: 4/27/2017 1:20 PM
 FILE NAME: C:\pwworking\scd\1759748\WRI-ALP06-ULT.dwg



EXISTING FACILITIES		
NO.	FACILITY	ELEVATIONS
1	FOX PAPA LLC/ALYESKA HELICOPTER	
2	LAKE AND PEN AIR	183.4'
3	SLIPSTREAM HANGARS A & B & C	
4	CIVIL AIR PATROL	152.1'
5	FAA AIR TRAFFIC CONTROL TOWER (ANTENNA ELEV.)	203.4'
6	PARAMOUNT INVESTMENT	167.2'
7	HILLER ILS/WINGS OF FREEDOM	
8	NORTHLAND HANGAR DBA REEVE AUTOMOTIVE	152.9'
9	NORTH EDGE LLC	181.5'
10	STODDARD AERO SERVICES, INC.	
11	MRI AIRPORT MANAGEMENT OFFICE	
12	MICHAEL B. SPERNAK & MARITA C. CROSSBY	148.5'
13	DIMOND D. PARTNERS	143.3'
14	DIMOND D. PARTNERS	
15	DAN'S HANGARS	151.8'
16	PACIFIC ALASKAN AIRWAYS LLC	153.9'
17	ALASKA AIR TRANSIT	
18	ACE HANGARS A,B,C,D. (POLE ELEV.)	173.1'
19	AERO TWIN, INC.	154.9'
20	A & W SERVICES (ANTENNA ELEV.)	161.6'
21	UNIVERSITY OF ALASKA, ANCHORAGE	155.1'
22	UNIVERSITY OF ALASKA, ANCHORAGE (LIGHT POLE)	163.6'
23	AERO CENTER PARTNERSHIP	139.2'
24	MUNICIPALITY OF ANCHORAGE	151.8'
25	A.C.E. FLYERS, INC. DBA JAY-HAWK AIR	135.3'
26	EVERGREEN HELICOPTERS OF ALASKA, INC. (ANTENNA ELEV.)	170.0'
27	AERO METRIC, INC.	148.5'
28	T-HANGARS UNITS/20 INDIVIDUAL LEASE LOTS	137.6'
29	FUEL ISLAND	

LEGEND		
EXISTING	FUTURE	DESCRIPTION
---	---	AIRPORT PROPERTY LINE
---	---	BUILDING RESTRICTION LINE (BRL)
---	---	RUNWAY SAFETY AREA (RSA)
---	---	RUNWAY OBJECT FREE AREA (ROFA)
---	---	SECURITY FENCING
---	---	WINDSOCK
---	---	VASI/PLASI
---	---	TAXIWAY IDENTIFIER
---	---	RUNWAY PROTECTION ZONE
---	---	HELIPAD
---	---	AIRPORT REFERENCE POINT (ARP)
---	---	RUNWAY MONUMENT
---	---	HORIZONTAL AND VERTICAL CONTROL
---	---	ROADWAY (UNPAVED)
---	---	ROADWAY (PAVED)
---	---	BUILDINGS
---	---	REMOVE OR RELOCATE BUILDING
---	---	RUNWAY, APRON, TAXIWAY LIGHTING
---	---	LIGHTPOLE
---	---	MANHOLE
---	---	GATE
---	---	DISTANCE TO GO SIGNS
---	---	RELOCATED BEACON
---	---	HELIPAD
---	---	GPS MONUMENT

PLOT DATE: 5/30/2017 2:55 PM
 FILE: \\MARI6600\work\alpo\1759248\MRI-ALPOB-ULT.dwg



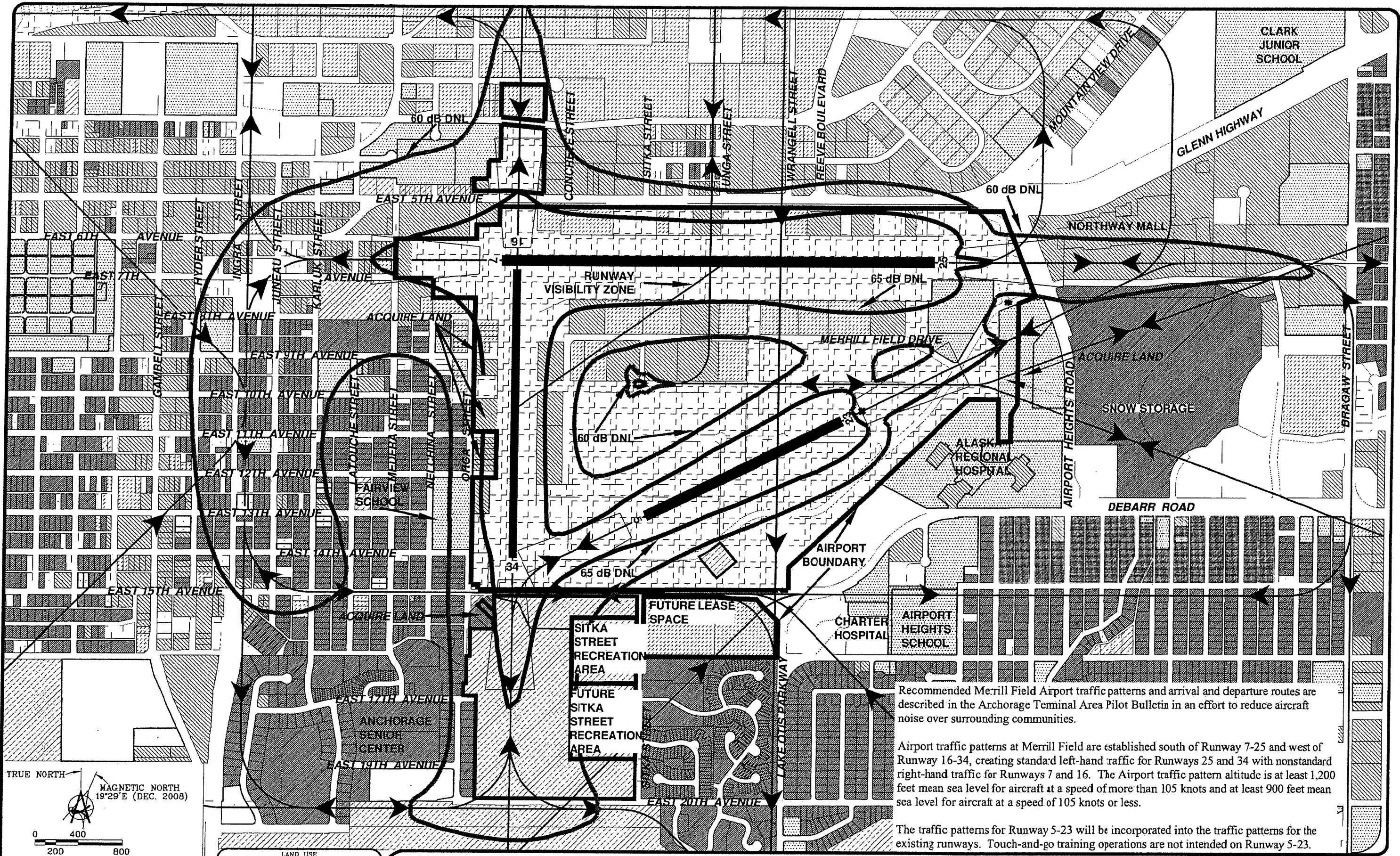
DJG	11/09/12	ASBUILT UPDATE
DJG	07/08/08	NEW RUNWAY NUMBERS & 5TH AVE DESIGN
DJG	12/30/08	AIRPORT REDLINES 9-16-2008
DJG	11/09/12	PROPERTY DATA UPDATE
CS	2/9/17	ASBUILT RECENT CONSTRUCTION

FAA AIRSPACE CASE NO.: 00-AAL-149-NRA
 FAA APPROVAL LETTER DATED: _____
 BY: _____
 FAA ALASKA REGION, AIRPORTS DIVISION

USKH

ANCHORAGE • WASILLA • JUNEAU • FAIRBANKS
 2515 'A' Street • Anchorage, Alaska 99503
 Phone (907) 276-4245 FAX (907) 258-4653

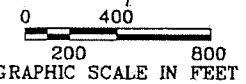
MERRILL FIELD AIRPORT
ANCHORAGE, AK
TERMINAL AREA PLAN



Recommended Merrill Field Airport traffic patterns and arrival and departure routes are described in the Anchorage Terminal Area Pilot Bulletin in an effort to reduce aircraft noise over surrounding communities.

Airport traffic patterns at Merrill Field are established south of Runway 7-25 and west of Runway 16-34, creating standard left-hand traffic for Runways 25 and 34 with nonstandard right-hand traffic for Runways 7 and 16. The Airport traffic pattern altitude is at least 1,200 feet mean sea level for aircraft at a speed of more than 105 knots and at least 900 feet mean sea level for aircraft at a speed of 105 knots or less.

The traffic patterns for Runway 5-23 will be incorporated into the traffic patterns for the existing runways. Touch-and-go training operations are not intended on Runway 5-23.



NOTE:
THIS DRAWING IS FOR PLANNING PURPOSES ONLY AND IS NOT INTENDED FOR CONSTRUCTION OR NAVIGATIONAL PURPOSES.

LAND USE	
[Symbol]	RESIDENTIAL
[Symbol]	COMMERCIAL
[Symbol]	INDUSTRIAL
[Symbol]	INSTITUTIONAL
[Symbol]	PARKS, OPEN SPACE AND RECREATION AREAS
[Symbol]	TRANSPORTATION RELATED
[Symbol]	VACANT LAND
[Symbol]	SOURCE: MUNICIPALITY OF ANCHORAGE

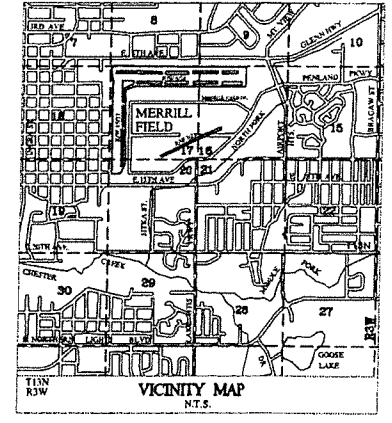
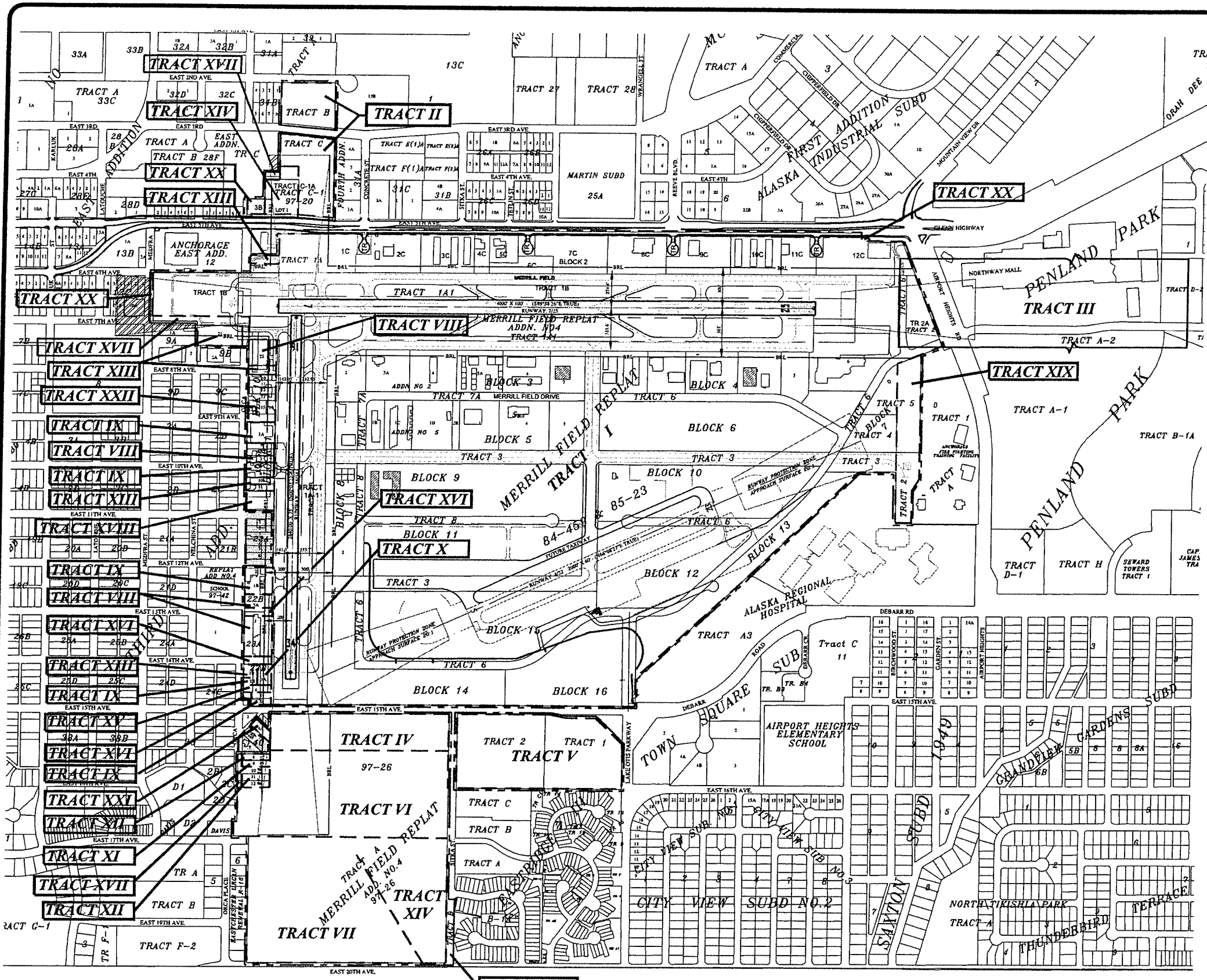
DJG	11/09/12	ASBUILT UPDATE
DJG	07/08/08	NEW RUNWAY NUMBERS & 5TH AVE DESIGN
DJG	12/30/08	AIRPORT REDLINES 9-16-2008
DJG	11/09/12	PROPERTY DATA UPDATE
CS	2/9/17	ASBUILT RECENT CONSTRUCTION

FAA AIRSPACE CASE NO.: 00-AAL-149-NRA
 FAA APPROVAL LETTER DATED: _____
 BY: _____
 FAA ALASKA REGION, AIRPORTS DIVISION

USKH
 ANCHORAGE • WASILLA • JUNEAU • FAIRBANKS
 2515 'A' Street • Anchorage, Alaska 99503
 Phone (907) 276-4245 FAX (907) 258-4653

MERRILL FIELD AIRPORT
 ANCHORAGE, AK
 LAND USE PLAN

PLOT DATE: 5/30/2017 3:14 PM
 FILE NAME: C:\pwworking\src\01759248\MRI-AP10-ULT.dwg



LAND ACQUISITION STATUS

TRACT	DESCRIPTION	TYPE
* I	Replat of Merrill Field - 336.28 acres	Fee Simple - *see below
**** II	Tracts B & C Merrill Field Lease Lots - 7.41 acres	Fee Simple - WD 3/23/43
III	State of Alaska - Patent No. 4535	Avigation Easement 10/31/79 (Expires 1/31/13)
IV	Replat of Merrill Field Portion of Tr. 4 - 16.75 acres	Fee Simple - Fed. Pat. 8/8/58 State Pat. 11/18/68
** V	A Portion of Tract 1 & Tract 2, Fourth Addition to Anchorage - Net Acres 14.95	Fee Simple - State Patent 11/18/68
VI	Replat of Merrill Field Portion of Tr. 4 - 17.38 acres	Fee Simple - Through FAA ADAP Grant 06 & 07 Acquired by WD 4/28/81
VII	Tract 9, Merrill Field Replat Add. No. 1 Resubdivision of Tract 7E & 8E Eastchester Subdivision - 19.16 acres	Fee Simple - Through FAA ADAP Grant 06 & 07 Acquired by Declaration of Taking 1984
VIII	Lots 5-8, Block 10, East Addition AOT; Lot 7, Block 1, Lot 5A, Block 22B, Lots 1-4, 5A & 6A, Block 23A, 3rd Addition AOT - 3.10 acres	Fee Simple - Through FAA AIP 07 Acquired by WD 4/18/86, 10/28/86, 12/10/86, 12/12/86
IX	Lots 1A, 5, 6, 8, 9 Block 1, Lot 1B, Block 22B, Lots 2B, 5, 6, Block 23B, 3rd Addition AOT - 1.19 acres	Fee Simple - Through FAA AIP 08 Acquired by WD 9/25/87, 9/28/87, 10/02/87, 12/01/87
X	Lot 3A, Block 23B, Third Addition - 0.36 acres	Fee Simple - Through FAA AIP 11, Acquired by WD 3/24/89
XI	Lot 9, Block 40, 3rd Addition - 0.24 acres	Fee Simple - Through Gift, Acquired by WD 3/20/89
XII	Lots 8, 10, 11, & 12, Block 40, 3rd Addition - 0.95 acres	Fee Simple - Through FAA AIP 12, Acquired by WD 9/10/90
XIII	South 60 of North 260', Block 11, Lots 1C & 1B, Block 9B, Lot 9, Block 10, East Addition; Lots 10 & 11, Block 1, Lot 1B, Block 23B, 3rd Addition - 2.36 acres	Fee Simple - Through FAA AIP 14, Acquired by WD 1/07/92, 8/16/91, 9/20/91, 10/18/91, 4/03/92 and QCD 1/14/92
**** XIV	Lot 1 of East Fifth Avenue Subdivision; Tract 8E, Resurvey Eastchester Subdivision - 9.37 acres	Fee Simple - Through FAA Grant AIP 16, Acquired by WD 12/04/92, QCD 3/23/93
XV	Lot 4, Block 23B, Third Addition - 0.24 acres	Fee Simple - Through FAA Grant AIP-21, Acquired by WD 3/11/96
** XVI	Lot 5A, Block 23B, 3rd Addition; and the replat of 13th & 14th Avenues R.O.W. vacation by Plat 97-42, Anchorage Recording District - 0.64 acres	Fee Simple - Through FAA Grant AIP-24, Acquired by WD 8/07/97, plat 97-42, Anchorage Recording District - 6/25/97
XVII	Vacation of Portions of 4th Ave. (.15 acres), 7th Ave & Orca St. (1.14 Ac.) and Sitka St. (.67 Ac.) All replatted by Plat 97-26 - 1.96 acres	Vacation Resolution 96-13A, B, C, & D Recorded 5/6/97
XVIII	South 150 Feet of Block One, Third Addition - 0.72 acres	Fee Simple - Through FAA Grant AIP 43, Acquired by WD 7/10/2007
XIX	East 175 Feet of Tract 5 (2.79 acres), East 175 Feet of Tract 3 (0.61 acres), and Tract 2 (1.17 acres) of Regional Fire Training Station Subdivision Tracts 1 Through 5 Anchorage Recording District PL2008-116 - 4.57 acres	Fee Simple - Land Exchange Agreement, plat 2008-116 recorded 11/17/2008 Designation of Management Authority October 16, 2012
XX	West 130 Feet of Lot 3B, Block 30B (0.34 acres), Portion of Lot 12C, Block 2 (0.06 acres), and Modira St. R.O.W. Vacation (0.25 acres), Merrill Field Replat Addn. No. 6, PL2009-120 - 0.65 acres	Fee Simple - Land Exchange Agreement, Acquired by QCD 8/10/2012, Vacation Resolution 2007-008, plat 2009-120 recorded 12/30/2009
XXI	Lot 4A, Block 40, 3rd Addition - 0.25 acres	Fee Simple - Through FAA Grant AIP-51, Acquired by WD 8/12/2010
XXII	Grantor: RDGP Realty LLC. Lots 10, 11, 12, 13, 15, and 16; Block 10; Merrill Field Subdivision, Plat No. P-164, Anchorage Recording District	Warranty Deed Oct. 13, 2015 Recorded Oct. 16, 2015 No. 2015-048625-9 FAA Grant AIP-64

TOTAL ACREAGE = 44220 ACRES (TRACTS I THROUGH XXII)
 * FROM: Warranty Deeds (WD) 7/05/29, 6/10/36, 11/17/42, 2/15/67, Federal Patents 8/08/58 and Airport use Restriction 10/31/79, State Patents 11/13/68 and 11/07/79
 3.00 acres released to State of Alaska for Glenn Hwy R.O.W. by QCD 8/10/2012, plat 2009-120
 ** 0.73 Acres Relinquished to the State of Alaska For Right-of-Way. 11-17-94, Plat 94-135
 *** 07 Acres released to the Municipality of Anchorage Dept. of Public Works for street Right-of-Way. Release by WD 07-17-2002.
 **** 0.15 acres released to the State of Alaska for Glenn Hwy R.O.W. by QCD 8/10/2012, plat 2009-120
 ***** 0.21 acres released to the State of Alaska for Glenn Hwy R.O.W. by QCD 8/10/2012, plat 2009-120

LEGEND

	Current Airport Boundary
	Acquisition Tract Boundaries
	Future Property Acquisition
	Future Avigation Easement Acquisition

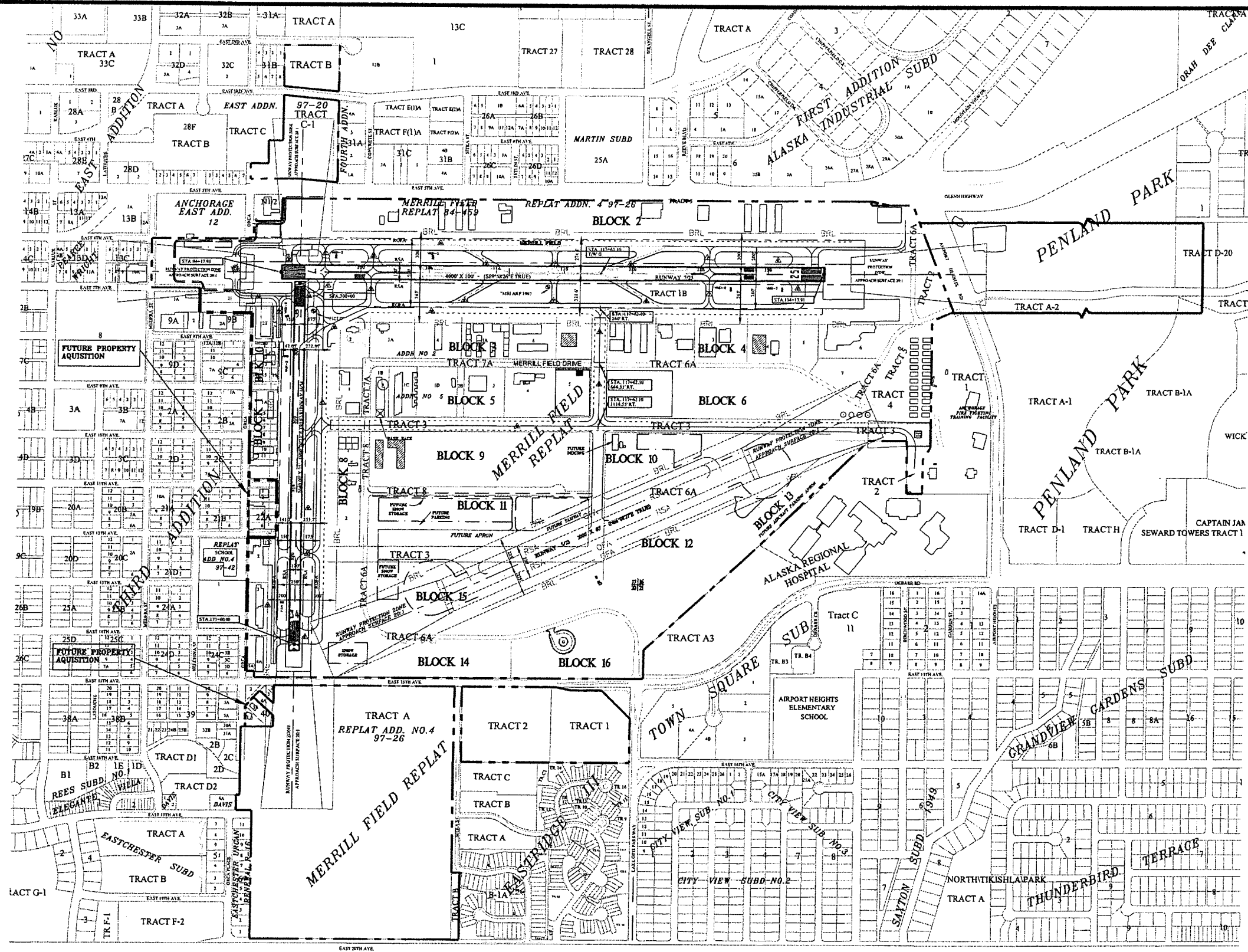
DJG	11/09/12	ASBUILT UPDATE
DJG	07/08/08	NEW RUNWAY NUMBERS & 5TH AVE DESIGN
DJG	12/30/08	AIRPORT REDLINES 9-16-2008
DJG	11/09/12	PROPERTY DATA UPDATE
CS	2/9/17	ASBUILT RECENT CONSTRUCTION

FAA AIRSPACE CASE NO.: 00-AAL-149-NRA
 FAA APPROVAL LETTER DATED: _____
 BY: _____
 FAA ALASKA REGION, AIRPORTS DIVISION

USKH
 ANCHORAGE • WASILLA • JUNEAU • FAIRBANKS
 2515 'A' Street • Anchorage, Alaska 99503
 Phone (907) 276-4245 FAX (907) 258-4653

MERRILL FIELD AIRPORT
 ANCHORAGE, AK
 PROPERTY MAP-EXHIBIT "A"

PLOT DATE: 6/26/2017 9:08 AM
 FILE NAME: C:\pwworking\pco_d1759248\MR-ALP11-ULT.dwg



LEGEND

- Current Airport Boundary
- Acquisition Tract Boundaries

D/JG	11/09/12	ASBUILT UPDATE
D/JG	07/08/08	NEW RUNWAY NUMBERS & 5TH AVE DESIGN
D/JG	12/30/08	AIRPORT REDLINES 9-16-2008
D/JG	11/09/12	PROPERTY DATA UPDATE
CS	2/9/17	ASBUILT RECENT CONSTRUCTION

FAA AIRSPACE CASE NO.: 00-AAL-149-NRA
 FAA APPROVAL LETTER DATED: _____
 BY: _____
 FAA ALASKA REGION, AIRPORTS DIVISION

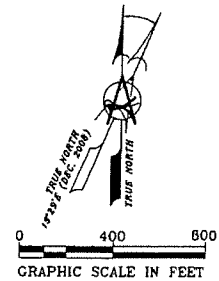
USKH

ANCHORAGE • WASILLA • JUNEAU • FAIRBANKS
 2515 'A' Street • Anchorage, Alaska 99503
 Phone (907) 276-4245 FAX (907) 258-4653

MERRILL FIELD AIRPORT
 ANCHORAGE, AK
LAND OCCUPANCY DRAWING

SHEET
12 of 13

PLOT DATE: 6/26/2017 9:02 AM
 FILE NAME: C:\pwworking\src\d1759248\MRI-ALP12-ULT.dwg

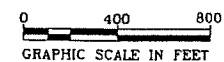


LOT & BLOCK	LESSEE	ADDRESS	AREA S.F.	EXPIRES
BLOCK 1	THIRD ADDITION			
BLOCK 1, LOT 1A	MOA	901/917 ORCA	31,191	
BLOCK 1, LOT 10	MOA	1015 ORCA	10,393	
BLOCK 1, LOT 11	MOA	1019 ORCA	10,393	
BLOCK 1, SOUTH 150'	MOA	1025 ORCA	31,179	
BLOCK 40	THIRD ADDITION			
BLOCK 40, LOT 4A	MOA	1513 MCHUGH LANE	10,200	
BLOCK 1	MERRILL FIELD REPLAT ADDN. NO. 6			
BLOCK 1, LOT 5A	PREMIER HANGARS OWNERS	955 ORCA	39,001	7/31/2063
BLOCK 2	MERRILL FIELD REPLAT ADDN. NO. 6			
BLOCK 2, LOT 1C	ALYESKA HELICOPTERS	1710 E. 5TH AVENUE	80,664	7/31/2065
BLOCK 2, LOT 2C	WILD COUNTRY, LLC	1740 E 5TH AVENUE	120,974	9/30/2059
BLOCK 2, LOT 3C	SLIPSTREAM HANGARS ASSOC.	1812 E. 5TH AVENUE	114,393	8/31/2059
BLOCK 2, LOT 4C	CILVIL AIR PATROL	1910 E. 5TH AVENUE	31,592	SLUP
BLOCK 2, LOT 5C	FAA ATCT	1950 E. 5TH AVENUE	44,911	5/31/2036
BLOCK 2, LOT 6C	MOA/ALPHA TRANSIENT	003-094-65-000	51,448	
BLOCK 2, LOT 7C	CHAZ AIRCRAFT PAINT FACILITY	2150 E. 5TH AVENUE	136,337	12/31/2066
BLOCK 2, LOT 8C	WINGS OF FREEDOM	2400 E. 5TH AVENUE	125,523	7/31/2068
BLOCK 2, LOT 9C	REEVE AIRMOTIVE	2424 E. 5TH AVENUE	120,543	2/28/2064
BLOCK 2, LOT 10C	CHUGACH HANGARS ASSOC	2570 E. 5TH AVENUE	107,205	7/31/2065
BLOCK 2, LOT 11C	NORTH EDGE, LLC	2600 E. 5TH AVENUE	67,161	4/30/2065
BLOCK 2, LOT 12C	STODDARD AERO SERVICE, INC.	550 STODDARD WAY	178,187	2/28/2065
BLOCK 3	MERRILL FIELD REPLAT			
BLOCK 3, LOT 1	AERO CENTER, LLC	940A MERRILL FIELD DR.	82,945	8/31/2059
BLOCK 3, LOT 2	MOA AIRPORT MANAGER'S OFFICE	800 MERRILL FIELD DR.	92,662	
BLOCK 3, LOT 3A	SPERNAK AIRWAYS	1707 MERRILL FIELD DR.	102,469	6/30/2019
BLOCK 3, LOT 4	ROGERS PARK	1841 MERRILL FIELD DR.	110,304	5/31/2061
BLOCK 3, LOT 5A	DAN'S HANGARS ASSOC.	1931 MERRILL FIELD DR.	110,342	5/31/2061
BLOCK 3, LOT 6	PACIFIC ALASKAN AIRWAYS, LLC	2015 MERRILL FIELD DR.	110,271	8/31/2058
BLOCK 3, LOT 7	ALASKA AIR TRANSIT	2113 MERRILL FIELD DR.	81,826	12/31/2072
BLOCK 4	MERRILL FIELD REPLAT			
BLOCK 4, LOT 1	ACE HANGARS ASSOCIATION	2321 MERRILL FIELD DR.	110,360	11/30/2055
BLOCK 4, LOT 2	AERO TWIN, INC.	2403 MERRILL FIELD DR.	89,775	12/31/2072
BLOCK 4, LOT 3	A&W SERVICES, LLC	2425 MERRILL FIELD DR.	122,850	12/31/2072
BLOCK 4, LOT 4	UNIVERSITY OF ALASKA	2555 MERRILL FIELD DR.	102,509	4/30/2060
BLOCK 4, LOT 5	UNIVERSITY OF ALASKA	2555 MERRILL FIELD DR.	72,655	4/30/2060
BLOCK 4, LOT 6	UNIVERSITY OF ALASKA	2811 MERRILL FIELD DR.	265,117	7/31/2035
BLOCK 4, LOT 7	UNIVERSITY OF ALASKA	2811 MERRILL FIELD DR.	79,318	7/31/2035
BLOCK 5	MERRILL FIELD REPLAT			
BLOCK 5, LOT 1B	MOA/MX BUILDING	931 MERRILL FIELD DR.	49,141	
BLOCK 5, LOT 1C	KRAFT, EDWIN	1800 MERRILL FIELD DR.	3,770	6/30/2028
BLOCK 5, LOT 1C	HUDSON, GUY	1800 MERRILL FIELD DR.	3,770	6/30/2028
BLOCK 5, LOT 1C	MOON, KEN	1800 MERRILL FIELD DR.	3,770	6/30/2028
BLOCK 5, LOT 1C	PALMIER, JOSEPH	1800 MERRILL FIELD DR.	3,770	6/30/2028
BLOCK 5, LOT 1C	HANSON, ROBERT	1800 MERRILL FIELD DR.	3,770	6/30/2028
BLOCK 5, LOT 1C	RUDDEROW TRUST	1800 MERRILL FIELD DR.	3,770	6/30/2028
BLOCK 5, LOT 1C	HANSON, BRIAN	1800 MERRILL FIELD DR.	3,770	6/30/2028
BLOCK 5, LOT 1C	EDWARDS, STEPHEN	1800 MERRILL FIELD DR.	3,770	6/30/2028
BLOCK 5, LOT 1C	TOWER PROPERTIES	1800 MERRILL FIELD DR.	3,770	6/30/2028
BLOCK 5, LOT 1C	WAGGOOD, CLAYTON	1800 MERRILL FIELD DR.	3,770	6/30/2028
BLOCK 5, LOT 1C	BLEDSE, MARK	1800 MERRILL FIELD DR.	3,770	6/30/2028
BLOCK 5, LOT 1C	POST, BILL	1800 MERRILL FIELD DR.	3,770	6/30/2028
BLOCK 5, LOT 1C	LYME TRUST	1800 MERRILL FIELD DR.	3,770	6/30/2028
BLOCK 5, LOT 1C	ROTH, COLIN	1800 MERRILL FIELD DR.	3,770	6/30/2028
BLOCK 5, LOT 1C	HIXSEN, MICHAEL	1800 MERRILL FIELD DR.	3,770	6/30/2028
BLOCK 5, LOT 1C	TRAVIS, MICHAEL	1800 MERRILL FIELD DR.	3,770	6/30/2028
BLOCK 5, LOT 1C	GILL, JAMES	1800 MERRILL FIELD DR.	3,770	6/30/2028
BLOCK 5, LOT 1C	ROTH, BILL	1800 MERRILL FIELD DR.	3,770	6/30/2028
BLOCK 5, LOT 1C	BOSLOUGH CONSTRUCTION	1800 MERRILL FIELD DR.	3,770	6/30/2028
BLOCK 5, LOT 1C	JOHNSTONE, KARL	1800 MERRILL FIELD DR.	3,770	6/30/2028
BLOCK 5, LOT 1D	JAY HAWK AIR	1842 MERRILL FIELD DR.	110,318	5/1/2071

LOT & BLOCK	LESSEE	ADDRESS	AREA S.F.	EXPIRES
BLOCK 5, LOT 2B	MOA/STORM DRAIN AREA	003-094-21-000	18,418	
BLOCK 5, LOT 3	ERICKSON AIR CRANE	1935 MERRILL FIELD DR.	110,317	1/31/2021
BLOCK 5, LOT 4	QUANTUM SPATIAL	2014 MERRILL FIELD DR. ANCH.	137,901	12/31/2064
BLOCK 5, LOT 5	MOA/GOLF WEST APRON	003-094-18-000	95,500	
BLOCK 6	MERRILL FIELD REPLAT			
BLOCK 6	MOA/GOLF EAST APRON	004-104-09-000	602,430	
BLOCK 8	MERRILL FIELD REPLAT			
BLOCK 8, LOT 1	EXECUTIVE HANGARS	980 MERRILL FIELD DR.	72,502	9/30/2059
BLOCK 8, LOT 2	D&D AIRPARK	1100 MERRILL FIELD DR.	126,074	5/13/2023
BLOCK 9	MERRILL FIELD REPLAT			
BLOCK 9	MOA/QUEBEC APRON	003-124-05-000	641,796	
BLOCK 10	MERRILL FIELD REPLAT			
BLOCK 10	MOA/GAS EXTRACTION AREA & EAST	004-091-62-000	589,755	
BLOCK 11	MERRILL FIELD REPLAT			
BLOCK 11	MOA/PORTION OF WHISKEY AREA	003-124-04-000	641,776	
BLOCK 12	MERRILL FIELD REPLAT			
BLOCK 12	MOA/PORTION OF WHISKEY AREA	004-091-63-000	546,661	
BLOCK 13	MERRILL FIELD REPLAT			
BLOCK 13	MOA/PORTION OF WHISKEY AREA	004-091-64-000	358,660	
BLOCK 14	MERRILL FIELD REPLAT			
BLOCK 14	MOA/PORTION CHARLIE SOUTH & VIEWING AREA	003-131-10-000	502,943	
BLOCK 15	MERRILL FIELD REPLAT			
BLOCK 15	MOA/MERRILL FIELD DR/WHISKEY WEST	003-131-12	760,500	
BLOCK 16	MERRILL FIELD REPLAT			
BLOCK 16	MOA/MERRILL FIELD DR/11TH AF MEMORIAL	003-131-11-000	421,650	
BLOCK 10	PLAT P-164 EAST ADDITION			
BLOCK 10, LOT 10		819 ORCA STREET	10,393	1/31/2037
BLOCK 10, LOT 11		819 ORCA STREET	10,393	1/31/2037
BLOCK 10, LOT 12		819 ORCA STREET	10,393	1/31/2037
BLOCK 10, LOT 13		819 ORCA STREET	10,393	1/31/2037
BLOCK 10, LOT 14		819 ORCA STREET	6,900	1/31/2037
BLOCK 10, LOT 15		819 ORCA STREET	6,900	1/31/2037
BLOCK 10, LOT 16		819 ORCA STREET	6,986	1/31/2037
BLOCK 30B	MERRILL FIELD REPLAT ADDN. NO. 6			
BLOCK 30 B, LOT 3B	MOA/N 5TH AVE TRANSFER FROM SOA	003-072-20-000	20,297	
LOTS	FAIRVIEW SCHOOL ADDN. NO. 1			
LOT 2	MOA/SKY TREK	003-111-75-000	49,340	SLUP
LOT 3	NORTH STAR HANGARS	1343 ORCA STREET	53,765	6/30/2061
LOT 4A	JANSSEN HANGAR ASSOC.	1415 ORCA STREET	45,759	11/30/2060
LOT 22	MERRILL FIELD HANGARS (ORCA)	721 ORCA STREET	38,700	9/30/2032
LOTS	MERRILL FIELD ADDN. NO. 4			
LOT 21	MOA/ORCA APRON	003-101-61-000	58,408	
TRACTS	MERRILL FIELD LEASE LOTS C-217			
TRACT B	MOA/2ND AVE. CLEAR ZONE	003-084-03-000	130,800	
TRACTS	MERRILL FIELD REPLAT			
TRACT 3	MOA/TAXIWAY QUEBEC	004-091-61-000	808,207	
TRACT 8	MOA/PORTION MERRILL FIELD DR.	003-124-03-000	140,215	
TRACTS	MERRILL FIELD ADDITION NO. 2			
TRACT 7A	MOA/PORTION MERRILL FIELD DR.	003-094-29-000	123,628	

LOT & BLOCK	LESSEE	ADDRESS	AREA S.F.	EXPIRES
TRACTS	MERRILL FIELD ADDITION NO. 4			
TRACT 1	MOA/PORTION SNOW DUMP	003-131-08-000	341,000	
TRACT 2	MOA/PORTION SNOW DUMP	003-131-07-000	363,660	
TRACT A	MOA/N 15TH CLEAR ZONE	003-266-04-000	2,715,095	
TRACT B	MOA/PORTION SITKA STREET	003-266-05-000	29,310	
TRACTS	MERRILL FIELD ADDITION NO. 6			
TRACT 1B	MOA/RWYS 16/34 & 7/25	003-094-69-000	4,130,795	
TRACT 2A	MOA/PARK E. MERRILL FIELD DR.	004-104-17-000	84,371	
TRACT 6A	MOA/PORTION MERRILL FIELD DR.	004-104-18-000	637,404	
TRACT C-1A	MOA/RWY 7/25 CLEAR ZONE	003-083-37-000	265,406	
TRACT A	MOA/WILBUR CIRCLE	003-094-60-000	15,000	
TRACT B	MOA/ARDAIZ CIRCLE	003-094-66-000	19,497	
TRACT C	MOA/REEVE CIRCLE	004-071-33-000	15,000	
TRACT D	MOA/HUDSON CIRCLE	004-071-37-000	15,000	
TRACTS	MOA-REGIONAL FIRE TRAINING STA. SUB.			
TRACT 2	MOA/MEDEVAC RAMP AREA	004-091-01-000	51,071	
TRACT 3	MOA/TXY QUEBEC, GOLF & HELIPAD AREA	004-091-02-000	98,000	
TRACT 4	MOA/PORTION CAMP GROUND TRANSIENT	004-101-14-000	95,979	
TRACT 5	MOA/PORTION CAMP GROUND TRANSIENT	004-101-15-000	178,236	

PLOT DATE: 6/19/2017 10:37 AM
FILE NAME: C:\pwworking\lsc\1759248\MRI-ALP-13-ULT.dwg



DJG	11/09/12	ASBUILT UPDATE
DJG	07/08/08	NEW RUNWAY NUMBERS & 5TH AVE DESIGN
DJG	12/30/08	AIRPORT REDLINES 9-16-2008
DJG	11/09/12	PROPERTY DATA UPDATE
CS	2/9/17	ASBUILT RECENT CONSTRUCTION

FAA AIRSPACE CASE NO.: 00-AAL-149-NRA
FAA APPROVAL LETTER DATED: _____
BY: _____
FAA ALASKA REGION, AIRPORTS DIVISION

USKH
ANCHORAGE • WASILLA • JUNEAU • FAIRBANKS
2515 'A' Street • Anchorage, Alaska 99503
Phone (907) 276-4245 FAX (907) 258-4653

MERRILL FIELD AIRPORT
ANCHORAGE, AK
LAND OCCUPANCY TABLE

SHEET
13 OF 13