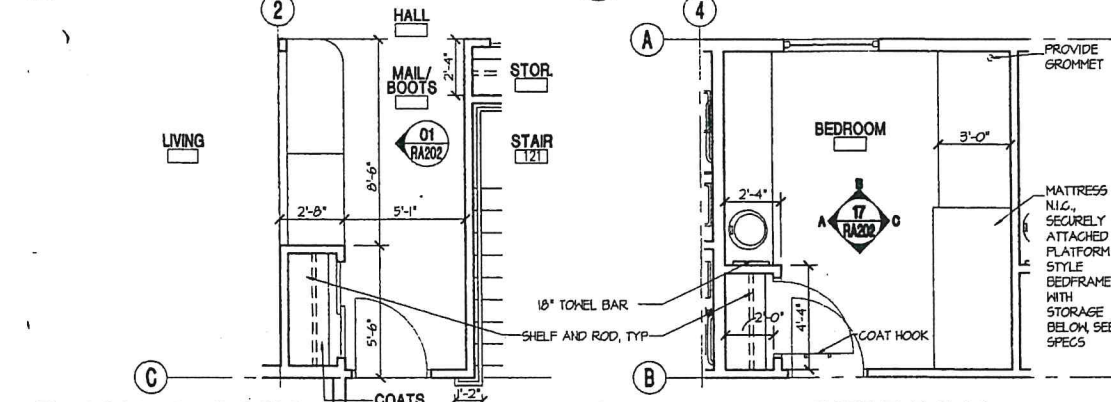


20 DINING/KITCHEN  
RA101 APPROXIMATE SCALE: 1/4" = 1'-0"

16 LAUNDRY  
RA101 APPROXIMATE SCALE: 1/4" = 1'-0"

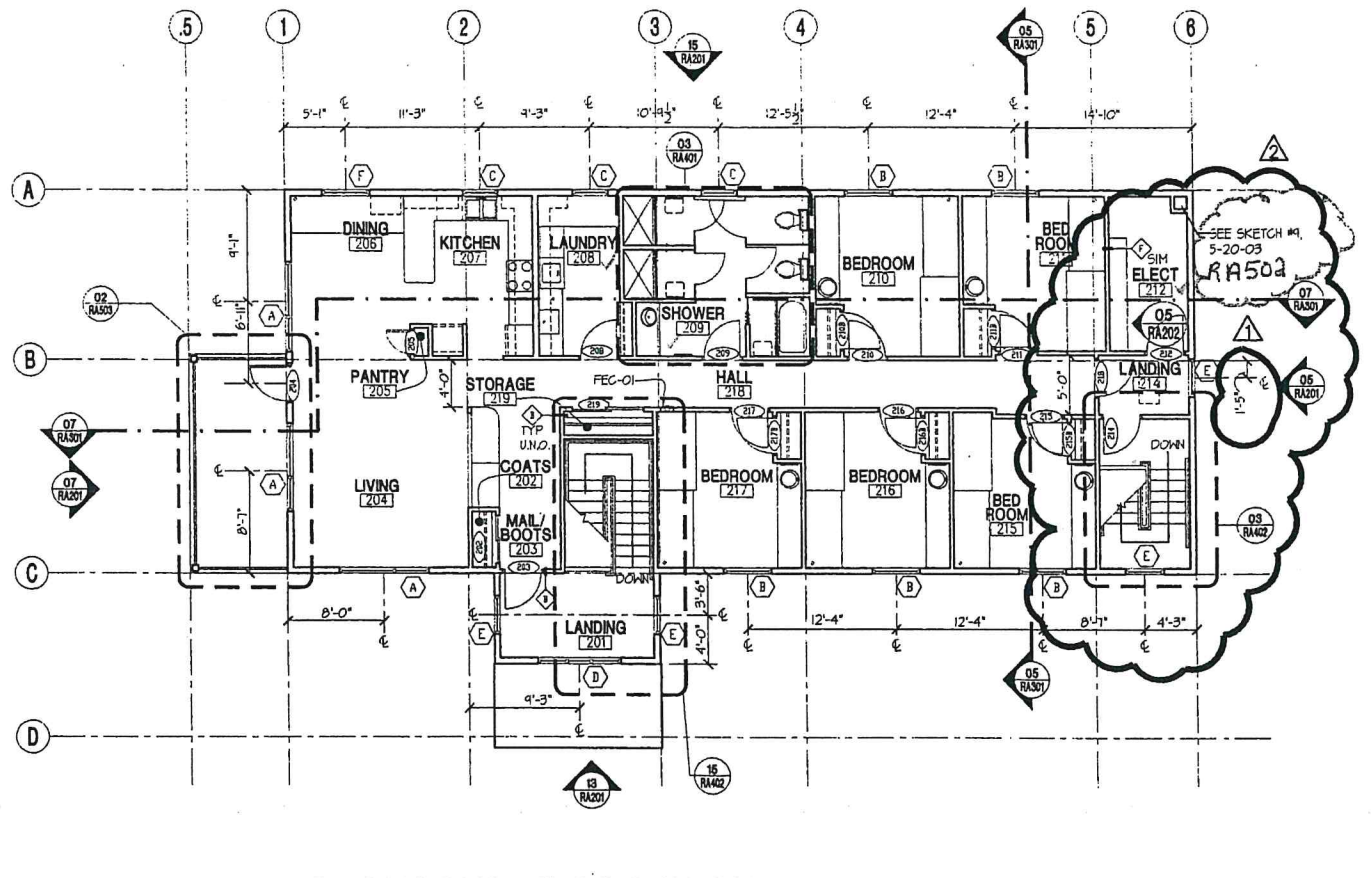


19 MAIL/BOOTS  
RA101 APPROXIMATE SCALE: 1/4" = 1'-0"

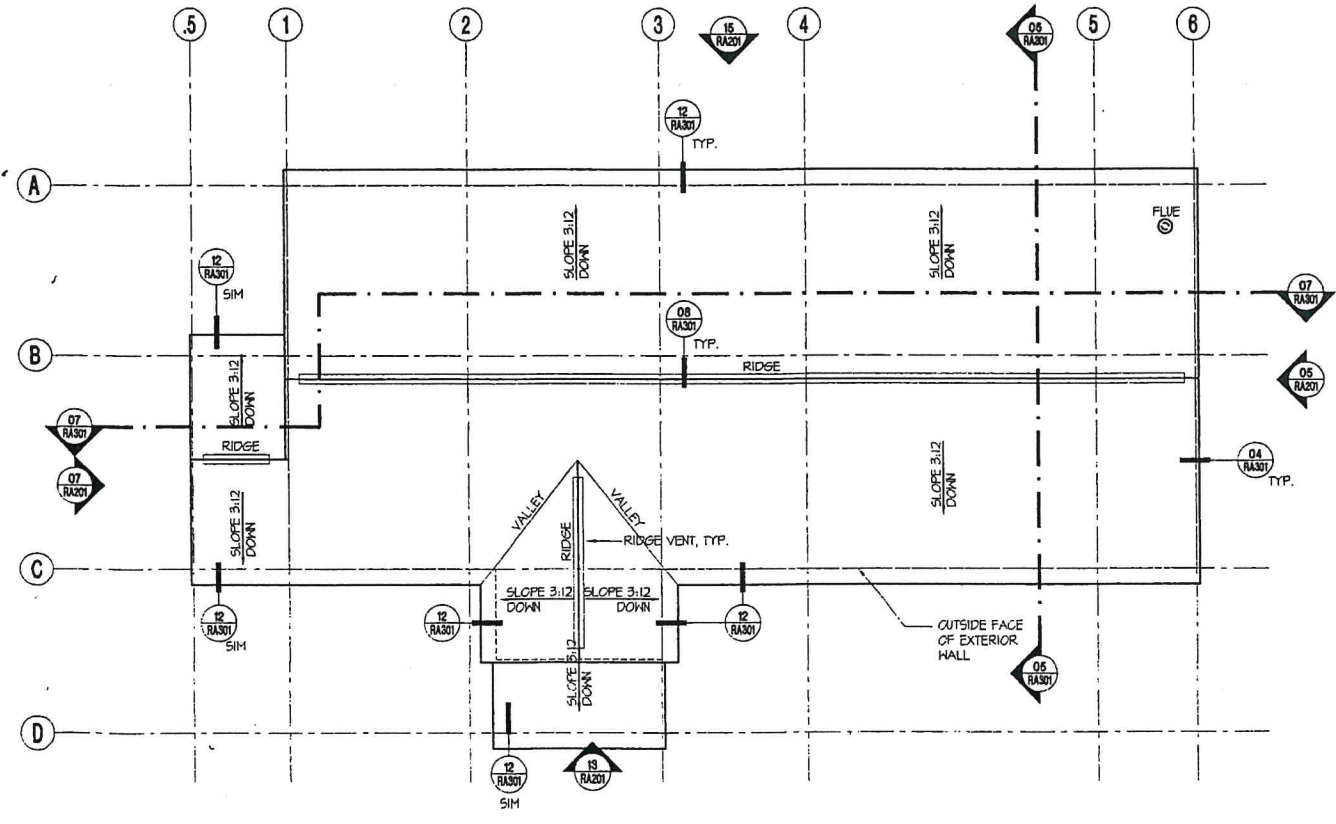
15 TYPICAL BEDROOM  
RA101 APPROXIMATE SCALE: 1/4" = 1'-0"

GENERAL NOTES

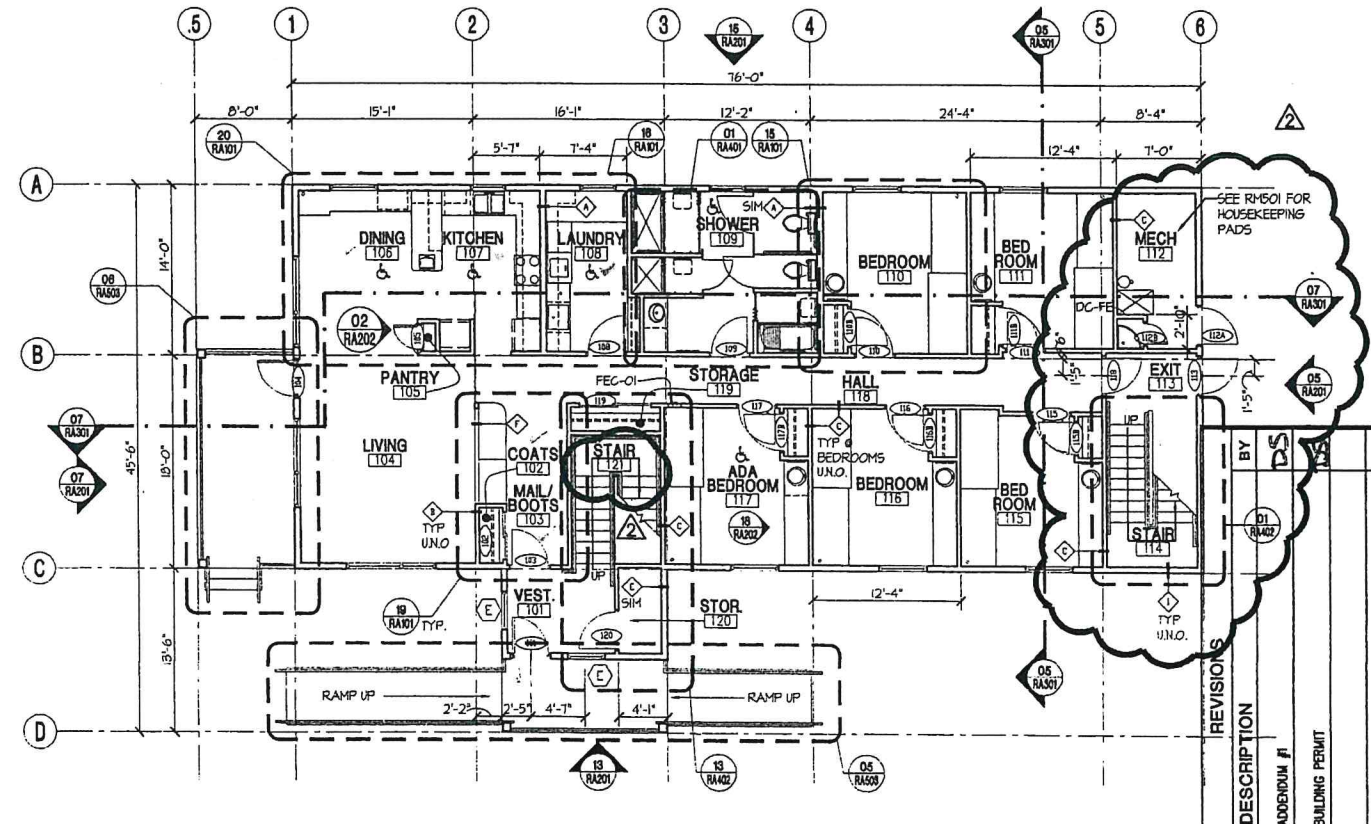
1. INTERIOR PARTITION TYPES DENOTE THAT INDICATED TYPE EXTENDS PAST DOORS, WINDOWS, ETC. OR UNTIL PARTITION SEGMENT CHANGES BY DESIGNATION OF NEW SYMBOL OR TYPICAL WALL TYPE.
2. WINDOW TYPES ARE NOTED ON SECOND FLOOR PLAN. SECOND FLOOR WINDOWS ARE IDENTICAL TO FIRST FLOOR WINDOWS UNLESS NOTED OTHERWISE (U.N.O.).
3. TYPICAL EXTERIOR WALL TYPE IS 1 U.N.O., SEE RAS01.
4. TYPICAL INTERIOR PARTITION TYPE IS B U.N.O., SEE RAS01. PARTITION TYPES ARE NOTED ON FIRST FLOOR PLAN AND APPLY TO SECOND FLOOR PLAN U.N.O.
5. EXTERIOR WINDOW AND DOOR OPENINGS ARE DIMENSIONED ON SECOND FLOOR PLAN. THESE DIMENSIONS ARE IDENTICAL FOR FIRST FLOOR U.N.O.
6. DIMENSIONS APPLY TO BOTH FLOORS, U.N.O.



07 SECOND FLOOR PLAN  
RA101 APPROXIMATE SCALE: 1/8" = 1'-0"



13 ROOF PLAN  
RA101 APPROXIMATE SCALE: 1/8" = 1'-0"



05 FIRST FLOOR PLAN  
RA101 APPROXIMATE SCALE: 1/8" = 1'-0"

REV.	DATE	DESCRIPTION	BY
1	3/27/03	ADDENDUM #1	DDS
2	5/20/03	BUILDING PERMIT	DDS

PROJECT NO. 0218.00  
 DRAWN BY: DDS  
 REVIEWED BY: [Signature]  
 DATE: 3/6/03  
 CONSTRUCTION DOCUMENTS TITLE  
 RESIDENCE PLANS  
 SHEET NO. RA101

ABUSED WOMEN'S  
 AID IN CRISIS, INC.  
 100 W. 13TH AVE. / ANCHORAGE, ALASKA

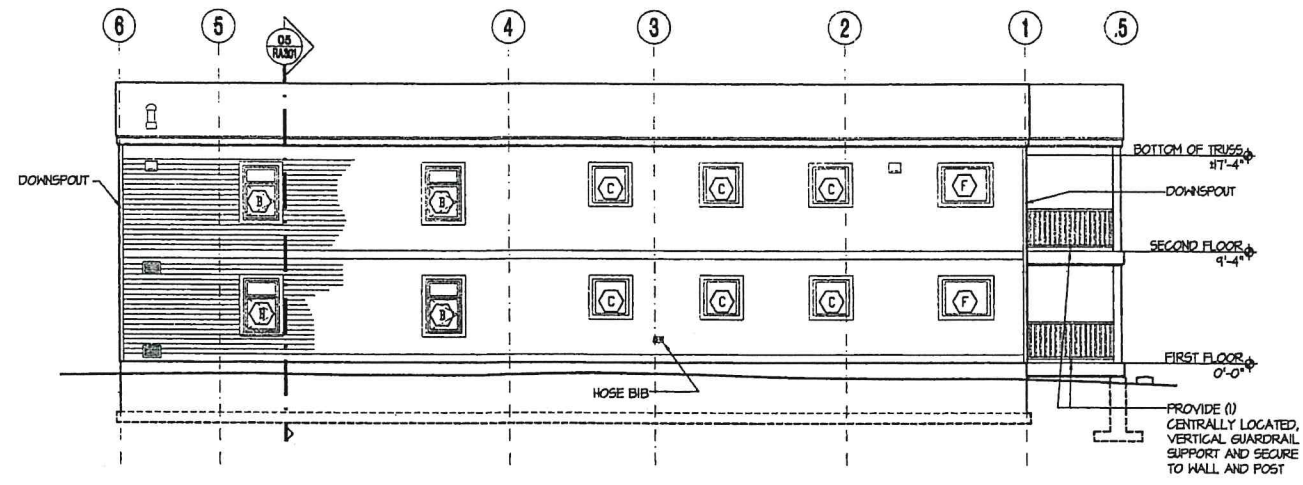
**LIVINGSTON STONE**  
 ARCHITECTURE  
 ENGINEERING  
 PLANNING  
 INTERIOR DESIGN  
 3800 ARCTIC BOULEVARD  
 SUITE 301  
 ANCHORAGE, ALASKA 99503-3798  
 TEL 907 562 2058  
 FAX 907 561 4328



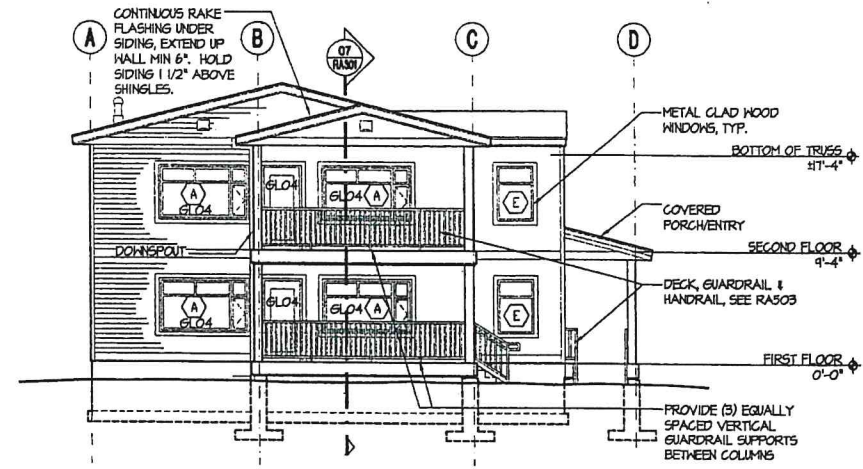
Copyright © 2003 by Livingston Stone, Inc.  
 All rights reserved. All parts of this drawing and the design it represents are instruments of service, and without the expressed, written permission of Livingston Stone, Inc., neither its exclusive property, and shall not be used, reproduced, or stored in any form. The "Livingston Stone, Inc." name and logo are trademarks of Livingston Stone, Inc.

RA101 10/17/03

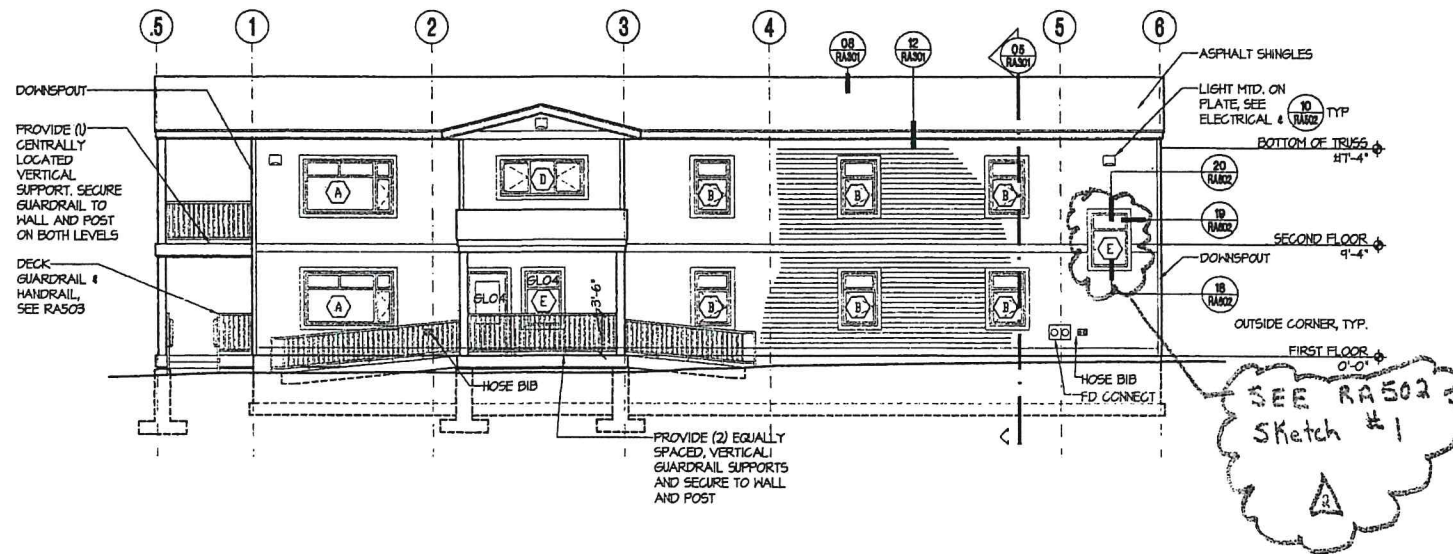




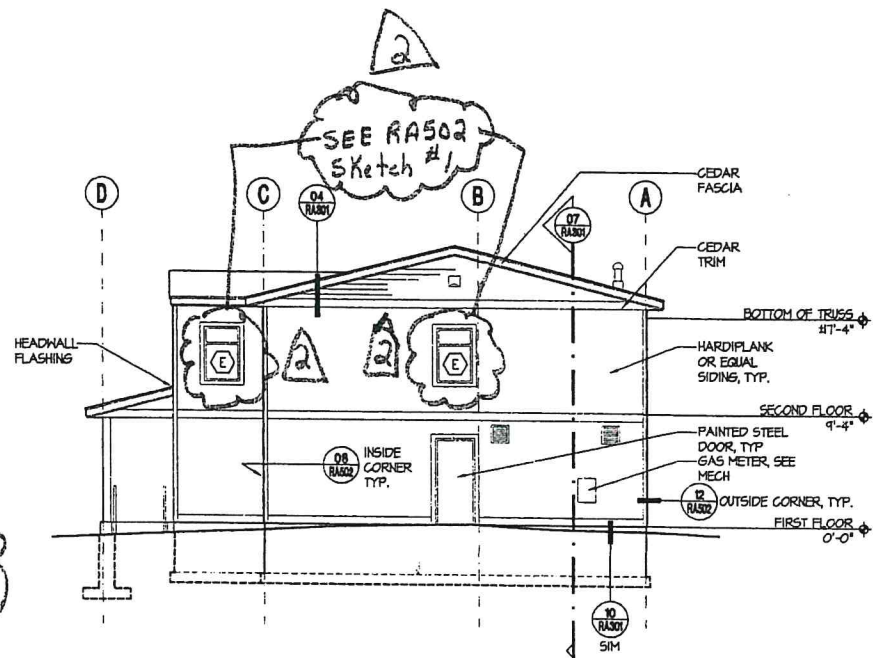
16 WEST ELEVATION  
A201 APPROXIMATE SCALE: 1/8"=1'-0" 0 2 4 8



07 SOUTH ELEVATION  
A201 APPROXIMATE SCALE: 1/8"=1'-0" 0 2 4 8



13 EAST ELEVATION  
A201 APPROXIMATE SCALE: 1/8"=1'-0" 0 2 4 8



05 NORTH ELEVATION  
A201 APPROXIMATE SCALE: 1/8"=1'-0" 0 2 4 8

ABUSED WOMEN'S  
AID IN CRISIS, INC.

100 W. 13TH AVE. / ANCHORAGE, ALASKA

**LIVINGSTON  
STONE**  
ARCHITECTURE  
ENGINEERING  
PLANNING  
INTERIOR DESIGN  
3000 ARCTIC BOULEVARD  
SUITE 301  
ANCHORAGE, ALASKA 99503-5790  
TEL. 907.562.2058  
FAX 907.561.4528



Copyright © 2003 by Livingston Stone, Inc.  
All rights reserved. All parts of this drawing  
and the design it represents are instruments of  
service, and without the expressed, written  
permission of Livingston Stone, Inc., remain  
its exclusive property, and shall not be  
used, reproduced, or stored in any form.  
The "Livingston Stone, Inc." name and logo  
are trademarks of Livingston Stone, Inc.™

PROJECT NO. 0218.00  
DRAWN BY: DDS  
REVIEWED BY: [Signature]  
DATE: 3/6/03

CONSTRUCTION DOCUMENTS  
TITLE

RESIDENCE  
EXTERIOR  
ELEVATIONS

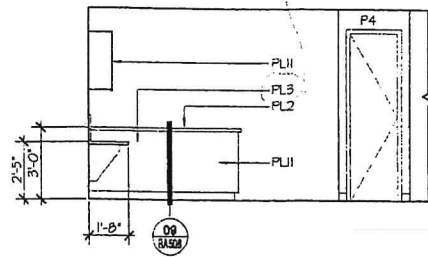
SHEET NO.  
RA201

Revised 6/25/03

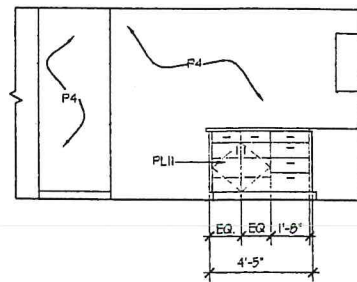


**GENERAL NOTES**

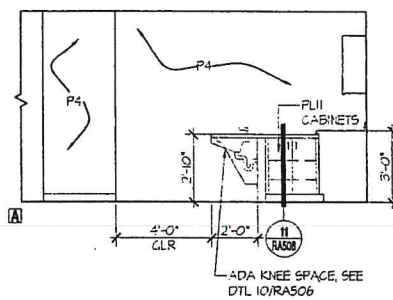
1. ALL EXPOSED PIPING BENEATH LAVATORIES AND SINKS IN ADA ACCESSIBLE ROOMS SHALL BE INSULATED PER ADA REGULATIONS. REFERENCE SPECS FOR ACCEPTABLE PRODUCTS
2. ADJUSTABLE SHELVES, WHERE INDICATED, SHALL BE MOUNTED ON HEAVY DUTY METAL SHELF STANDARDS, SEE SPEC
3. REFERENCE 02/RAS06 FOR TYPICAL CABINET DETAIL



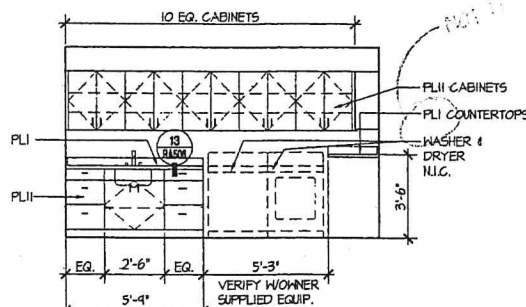
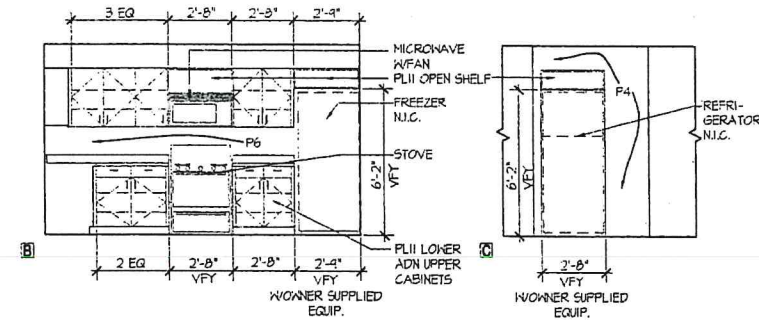
**20 206 DINING**  
RA202 APPROXIMATE SCALE: 1/4"=1'-0"



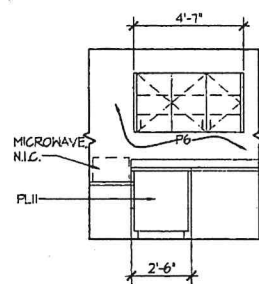
**16 207 KITCHEN**  
RA202 APPROXIMATE SCALE: 1/4"=1'-0"



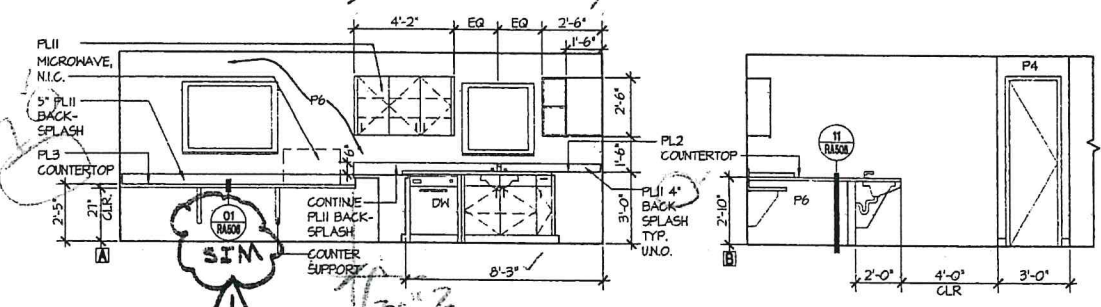
**12 107 KITCHEN**  
RA202 APPROXIMATE SCALE: 1/4"=1'-0"



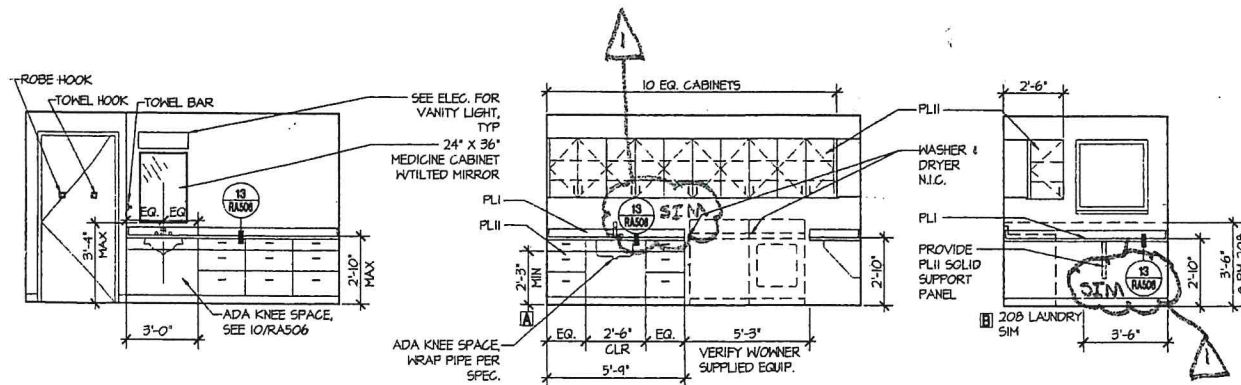
**15 208 LAUNDRY**  
RA202 APPROXIMATE SCALE: 1/4"=1'-0"



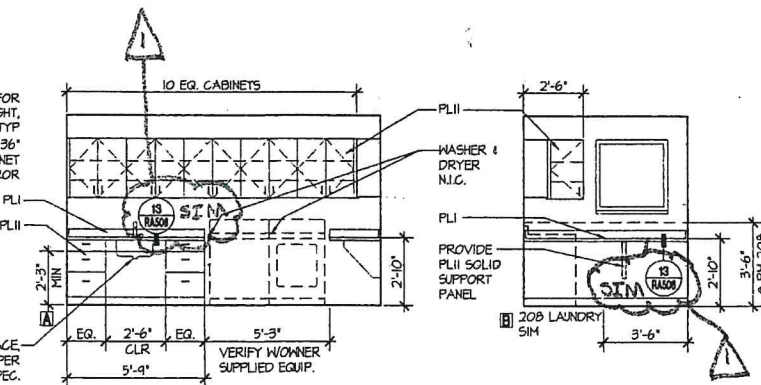
**11 206 & 207 ISLAND**  
RA202 APPROXIMATE SCALE: 1/4"=1'-0"



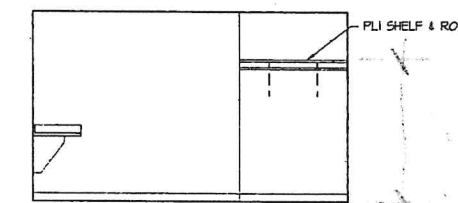
**07 106 DINING & 107 KITCHEN**  
RA202 APPROXIMATE SCALE: 1/4"=1'-0"



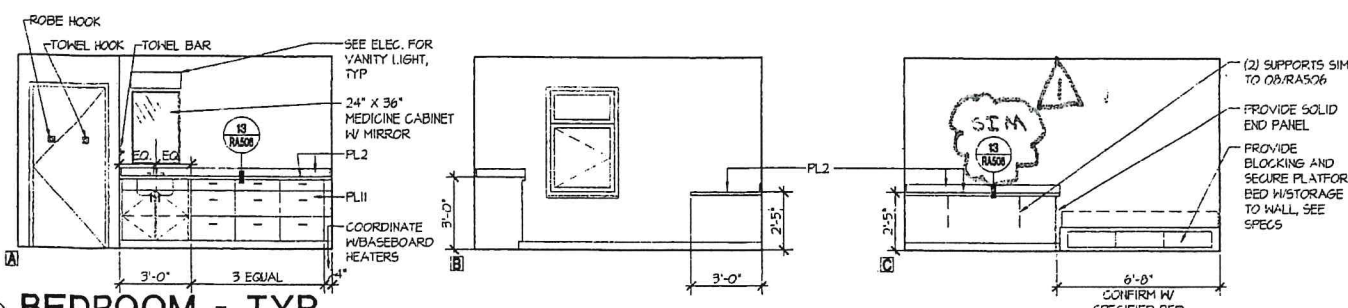
**18 117 BEDROOM**  
RA202 APPROXIMATE SCALE: 1/4"=1'-0"



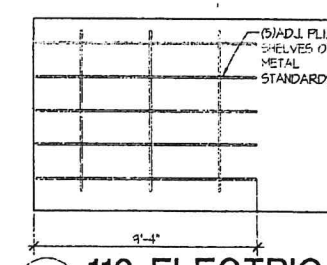
**14 108 LAUNDRY**  
RA202 APPROXIMATE SCALE: 1/4"=1'-0"



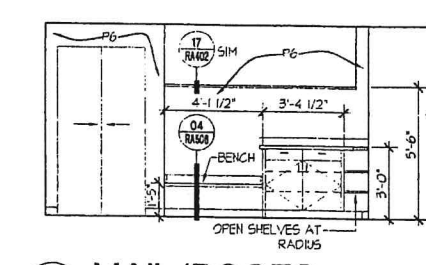
**02 PANTRY**  
RA202 APPROXIMATE SCALE: 1/4"=1'-0"



**17 BEDROOM - TYP**  
RA202 APPROXIMATE SCALE: 1/4"=1'-0"



**05 112 ELECTRICAL**  
RA202 APPROXIMATE SCALE: 1/4"=1'-0"



**01 MAIL/BOOTS**  
RA202 APPROXIMATE SCALE: 1/4"=1'-0"

**ABUSED WOMEN'S  
AID IN CRISIS, INC.**

100 W. 13TH AVE. / ANCHORAGE, ALASKA

**LIVINGSTON  
STONE**  
ARCHITECTURE  
ENGINEERING  
PLANNING  
INTERIOR DESIGN



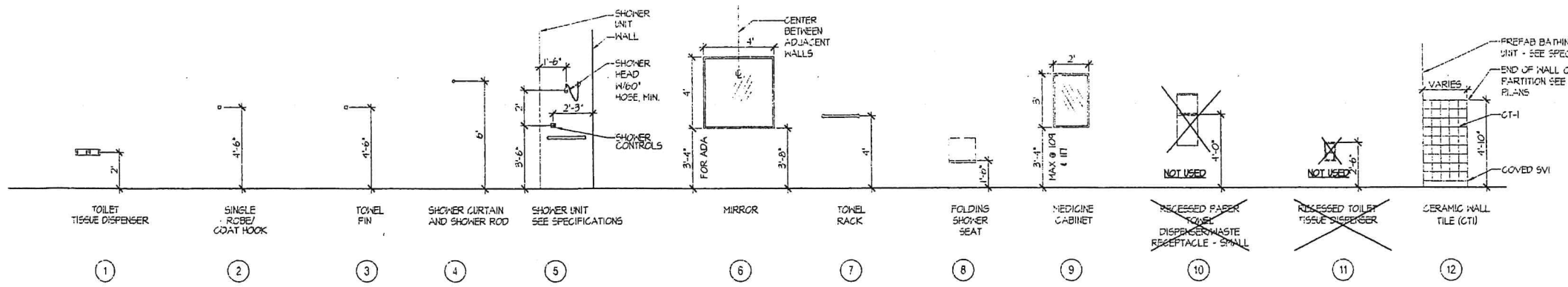
Copyright © 2003 by Livingston Stone, Inc. All rights reserved. All parts of this drawing and the design it represents are instruments of service, and without the expressed, written permission of Livingston Stone, Inc. remain its exclusive property, and shall not be used, reproduced, or stored in any form. The "Livingston Stone, Inc." name and logo are trademarks of Livingston Stone, Inc.

PROJECT NO. 0218.00  
DRAWN BY: DDS  
REVIEWED BY: [Signature]  
DATE: 3/6/03  
**CONSTRUCTION DOCUMENTS**  
TITLE  
**RESIDENCE**  
**INTERIOR ELEVATIONS**

SHEET NO.  
**RA202**

ANSI: C 101.1-1992

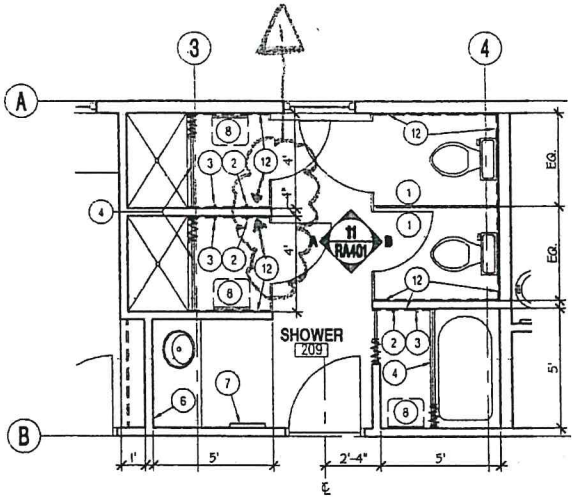
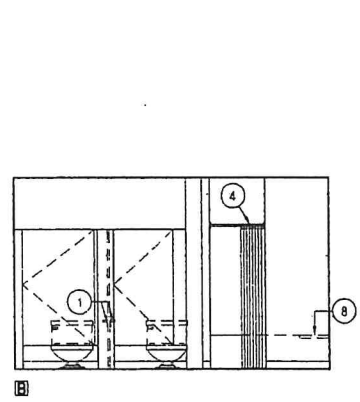
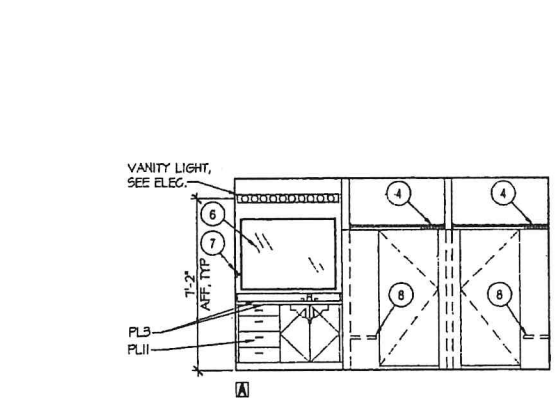
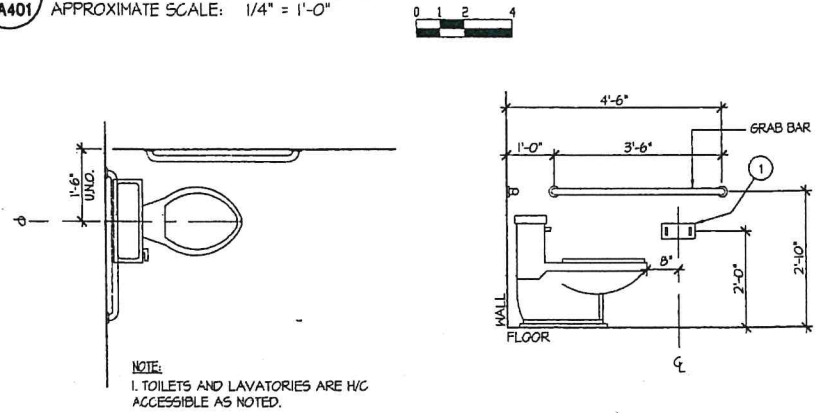




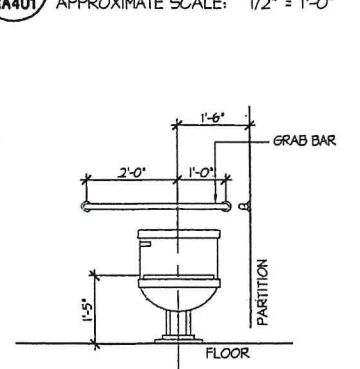
**GENERAL NOTES**

1. ALL EXPOSED PIPING BENEATH LAVATORIES & SINKS SHALL BE INSULATED PER ADA REGULATIONS. REFERENCE SPEC FOR ACCEPTABLE PRODUCTS.
2. SHOWER ROOM HALL BASE IS COVERED, HEAT WELDED SVI W/CAP, TYP. SEE SPECS.
3. DIMENSIONS ARE TO FACE OF STUD UNO.

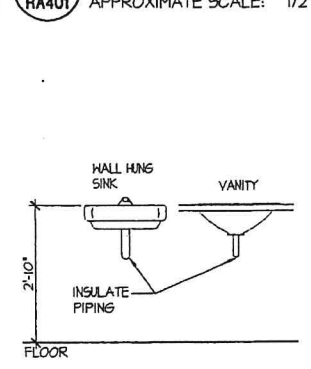
**20 TOILET ACCESSORIES**  
RA401 APPROXIMATE SCALE: 1/4" = 1'-0"



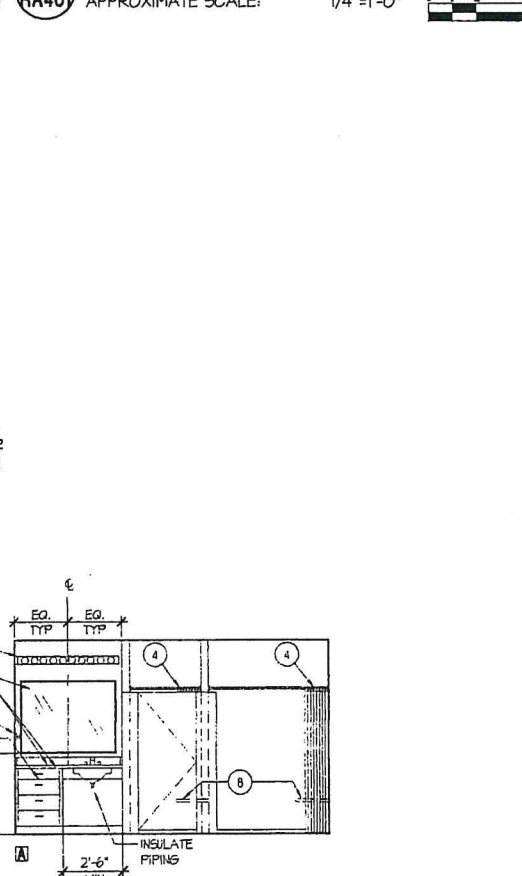
**19 ADA FIXTURE PLAN**  
RA401 APPROXIMATE SCALE: 1/2" = 1'-0"



**15 ADA FIXTURE ELEVATION**  
RA401 APPROXIMATE SCALE: 1/2" = 1'-0"

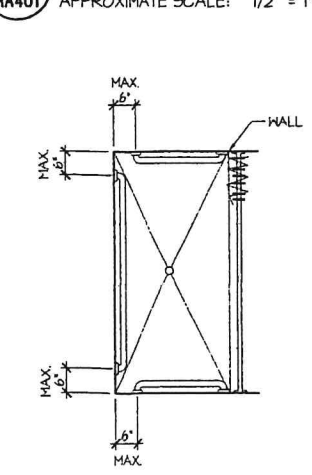


**11 209 SHOWER ELEVATIONS**  
RA401 APPROXIMATE SCALE: 1/4" = 1'-0"

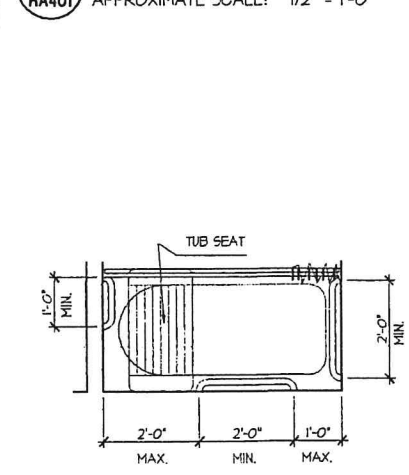


**03 209 SHOWER PLAN**  
RA401 APPROXIMATE SCALE: 1/4" = 1'-0"

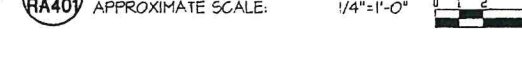
**18 ADA FIXTURE ELEVATION**  
RA401 APPROXIMATE SCALE: 1/2" = 1'-0"



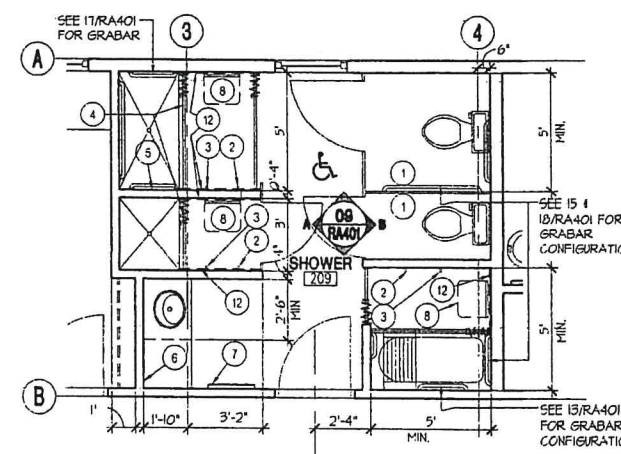
**14 ADA SINK HEIGHTS**  
RA401 APPROXIMATE SCALE: 1/2" = 1'-0"



**09 109 SHOWER ELEVATIONS**  
RA401 APPROXIMATE SCALE: 1/4" = 1'-0"



**01 109 SHOWER PLAN**  
RA401 APPROXIMATE SCALE: 1/4" = 1'-0"



**ABUSED WOMEN'S  
AID IN CRISIS, INC.**

100 W. 13TH AVE. / ANCHORAGE, ALASKA

**LIVINGSTON  
STONE**  
ARCHITECTURE  
ENGINEERING  
PLUMBING  
INTERIOR DESIGN

3000 ARCTIC BOULEVARD  
SUITE 300  
ANCHORAGE, ALASKA 99503-5790  
TEL. 907.862.2058  
FAX 907.861.4238



Copyright © 2003 by Livingston Stone, Inc. All rights reserved. All parts of this drawing and the design it represents are instruments of service, and without the expressed, written permission of Livingston Stone, Inc. remain its exclusive property, and shall not be used, reproduced, or stored in any form. The Livingston Stone, Inc. name and logo are trademarks of Livingston Stone, Inc.

PROJECT NO. 0218.00  
DRAWN BY: DDS  
REVIEWED BY: [Signature]  
DATE: 3/6/03

CONSTRUCTION DOCUMENTS  
TITLE  
**SHOWER ROOM PLANS  
ELEVATIONS & DETAILS**

SHEET NO.  
**RA401**

Reissued 6/25/03